



A SPARTACO COMPANY

# Huskie TOOLS

## Solutions For Utility Linemen and Professional Electricians



**Cable Cutting, Compression & Power Tools**



## **Providing The Utility Industry With Professional-Grade Hydraulic Cutting And Compression Tools**

For over 40 years, Huskie Tools has provided the utility industry with hydraulic cutting and compression tools. The battery-operated line of tools are among the lightest, fastest and most ergonomically designed on the market.

The Huskie Tools product line covers overhead, underground, substations, distribution and transmission projects.

Get a Huskie Tool into the hands of your utility professionals.



195 Internationale Blvd. - Glendale Heights, IL 60139  
800.860.6170

## CONTENTS

---

Series 7 Introduction	6
Series 7 Battery Powered Compression Tools	8-18
Series 7 Battery Powered Cutting Tools	19-29
Series 7 Power Tools	30-35
Series 6 Battery Powered Compression Tools	36-50
Series 6 Battery Powered Cutting Tools	51-62
Batteries, Chargers & Accessories	63-65
Manual Compression Tools	66-69
Remote Compression Heads	70-76
Compression Dies	77-83
Manual Cutting Tools	84-87
Remote Cutting Heads	88-91
Proper Cutting Technique	92
Hydraulic Pumps	93-101
Hydraulic C-FramE Punch & Ground Rod Bender	102-103



INTRODUCING

# SERIES 7 PRO-LINE TOOLS

THE FUTURE OF  
BATTERY-POWERED  
HYDRAULIC TOOLS  
IS HERE.



PROVEN PERFORMANCE.





---

# BATTERY POWERED COMPRESSION TOOLS

## BLUETOOTH



Huskie Tools has provided the electrical industry with rugged reliable hydraulic cutting & compression tools for over forty years. We are dedicated to developing product solutions that meet the ever-changing needs of Utility Linemen and Professional Electricians.

Series 7 PRO-LINE Tools feature a powerful 18v/5.0Ah battery platform that is compatible across all Cutting, Compression and Power Tool lines. Series 7 delivers proven performance by providing advanced technology, improved ergonomics, and high-performance tool operation.

When the job is on the line, you need professional-grade tools. Don't settle for big box retail-grade DIY tools. Demand performance and durability, demand Huskie Tools.

## SERIES7

PRO LINE

## FEATURES & TECHNOLOGY



### S7 TECHNOLOGY

Advanced internal circuitry monitors critical tool performance, provides audio/visual completed cycle verification, and records cycle count, pressure output, time, date, and GPS location data.



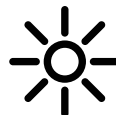
### BLUETOOTH CONNECTIVITY

Provides ready access to recorded tool performance data. Easily connect and download data to an enabled laptop or PC, then view and export data using dedicated Series 7 software.



### LIVE LINE RATED

Tested up to 75kV for use on live line applications without damage to internal circuitry.



### LED WORKLIGHT

Built-in white LED light aimed at tool jaws for working in low light conditions.



### 5-YEAR WARRANTY

Series 7 Compression & Cutting Tools are designed to provide years of reliable use in the field and feature a 5-year tool warranty.

# PROFESSIONAL-GRADE.

THE FUTURE OF BATTERY-POWERED  
HYDRAULIC TOOLS IS HERE.



RELEASE TRIGGER

**POWERFUL  
18V/5.0Ah BATTERY**  
Increased Capacity  
and Performance

**OPTIMIZED HYDRAULICS**  
Faster Advance  
and Retract Speeds

**PATENT PENDING  
AUTO-RETRACT**  
User Selectable ON/OFF

**HANDLE-FORWARD  
DESIGN**  
Improved Tool Balance  
and Handling

**AUDIO/VISUAL  
TOOL STATUS**  
Cycle Verification and  
Battery Capacity

**BLUETOOTH  
CONNECTIVITY**  
Data Downloads and  
Record Retention

**AUTO-RECORDED  
PERFORMANCE DATA**  
Captures the Last  
500 Tool Cycles

ADVANCE TRIGGER

SELECTABLE  
AUTO-RETRACT SWITCH

BRIGHT LED  
WORK LIGHT

INFORMATIVE LED  
STATUS INDICATOR



# BATTERY POWERED COMPRESSION TOOLS

## SL-7ND

6 Ton Compression Tool w/Changeable Heads

SERIES 7  
PRO LINE

### FEATURES

- Brush-guard jaw protectors help prevent accidental contact with energized circuits.
- Pull-pin design provides quick change-over between cutting and compression jaws.
- Forged compression jaws for long life and reduced wear.
- Head rotates 180° for optimum maneuverability in tight work spaces.



### OPTIONAL ACCESSORIES



### SPECIFICATIONS

Crimp Force	6 Ton
Weight	5.9 lbs. (2.7 kg)
Size	15.8"L x 4.5"H x 3.3"W 401mm x 115m x 8400

### CRIMPING ESTIMATES

Material	Cycles
4/0-4/0 H-Tap	375
500 MCM Cu	480

### CONNECTOR RANGE

Lugs & Splices	#8-500 MCM Cu #8-350 MCM Al
H-Taps	Up to 4/0-4/0

CUTTING CAPACITIES	SL-CHACSR	SL-CHCUAL	SLGW-JAW
Copper	350 MCM	500 MCM	Up to 4/0
Aluminum	350 MCM	1" OD	Up to 4/0
ACSR	336 MCM	Do Not Cut	Up to 4/0
EHS Guy Wire	Do Not Cut	Do Not Cut	Up to 3/8"
Soft Locks	Do Not Cut	Do Not Cut	Up to 3/8"
Soft Steel Bolts	Do Not Cut	Do Not Cut	Up to 3/8"

# BATTERY POWERED COMPRESSION TOOLS

## IL-7ND

6 Ton Compression Tool



### FEATURES

- 3 Optional heads to choose from
- Lightweight ergonomic design
- Accepts all "W" & "X" type dies
- One hand operation
- Rotational head
- Audible bypass when predetermined pressure is achieved
- Compatible with Huskie 18V battery
- Brush protection guards

### OPTIONAL ACCESSORIES



### SPECIFICATIONS

Crimp Force	6 Ton
Weight	7.3 lbs. (3.3 kg)
Size	3.7"L x 21"H x 3.1"W
	94mm x 533mm x 79mm

### CRIMPING ESTIMATES

Material	Cycles
4/0-4/0 H-Tap	300
500 MCM	400

### CONNECTOR RANGE

Lugs & Splices	#8-500 MCM Cu #8-350 MCM Al
H-Taps	Up to 4/0-4/0



## ECO-7EZ

6 Ton Compression Tool



### FEATURES

- 6 Optional heads to choose from
- Lightweight ergonomic design
- Hotstick tool available
- Accepts all "W" & "X" type dies
- One hand operation
- Rotational head
- Audible bypass when predetermined pressure is achieved
- Compatible with Huskie 18V battery
- Brush protection guard

### OPTIONAL ACCESSORIES



### SPECIFICATIONS

Crimp Force	6 Ton
Weight	6.5 lbs. (2.9 kg)
Size	3.7"L x 20.5"H x 2.8"W
	94mm x 521mm x 71mm

### CRIMPING ESTIMATES

Material	Cycles
4/0-4/0 H-Tap	300
500 MCM	400

### CONNECTOR RANGE

Lugs & Splices	#8-500 MCM Cu #8-300 MCM Al
H-Taps	Up to 4/0-4/0

### CUTTING CAPACITIES

ACSR	Up to 4/0
Std. Guy Wire	3/8"
Soft Locks	3/8"
Soft Steel Bolts	3/8"



# BATTERY POWERED COMPRESSION TOOLS

## REC-7NDSL

6 Ton Compression Tool w/Changeable Heads

**SERIES 7**  
PRO LINE



### FEATURES

- Optimized hydraulics offer 20% faster advance and 30% faster retraction speeds than previous generation tools.
- Patent pending Auto-Retract feature provides a user-selectable ON/OFF switch to enable or disable automatic cycle retraction. Auto-Retract can also be stopped mid-cycle to speed repeat operation.
- Brush-guard jaw protectors help prevent accidental contact with energized circuits.
- Pull-pin design provides quick change-over between cutting and compression jaws.
- Forged compression jaws for long life and reduced wear.
- Head rotates 180° for optimum maneuverability in tight work spaces.



### SPECIFICATIONS

Crimp Force	6 Ton
Weight	7.9 lbs. (3.6 kg)
Size	13.7"L x 10.6"H x 3.3"W 349mm x 269mm x 85mm

### CRIMPING ESTIMATES

Material	Cycles
4/0-4/0 H-Tap	550
500 MCM Cu	500

### CONNECTOR RANGE

Lugs & Splices	#8-500 MCM Cu #8-350 MCM Al
H-Taps	Up to 4/0-4/0

### OPTIONAL ACCESSORIES



CUTTING CAPACITIES	SL-CHACSR	SL-CHCUAL	SLGW-JAW
Copper	350 MCM	500 MCM	Up to 4/0
Aluminum	350 MCM	1" OD	Up to 4/0
ACSR	336 MCM	Do Not Cut	Up to 4/0
Std. Guy Wire	Do Not Cut	Do Not Cut	Up to 3/8"
Soft Locks	Do Not Cut	Do Not Cut	Up to 3/8"
Soft Steel Bolts	Do Not Cut	Do Not Cut	Up to 3/8"



# BATTERY POWERED COMPRESSION TOOLS



## REC-758U

6 Ton Compression Tool



**SERIES 7**  
PRO LINE

### FEATURES

- Optimized hydraulics offer 20% faster advance and 30% faster retraction speeds than previous generation tools.
- Patent pending Auto-Retract feature provides a user-selectable ON/OFF switch to enable or disable automatic cycle retraction. Auto-Retract can also be stopped mid-cycle to speed repeat operation.
- Pull-pin design provides quick change-over between cutting and compression jaws.
- Head rotates 180° for optimum maneuverability in tight work spaces.



**25CAT**

Optional Cutter Head  
Attachment for REC-658U

*\* Will not cut ALL 500 MCM copper cable; consult factory.*

### SPECIFICATIONS

Crimp Force	6 Ton
Weight	8.3 lbs (3.8 kg)
Size	13.7"L x 10.6"H x 3.3"W 349mm x 269mm x 85mm

### CRIMPING ESTIMATES

Material	Cycles
4/0-4/0 H-Tap	600
500 MCM Cu	550

### CONNECTOR RANGE

Lugs & Splices	#8-500 MCM Cu #8-350 MCM Al
H-Taps	Up to 4/0-4/0

### SPECIFICATIONS

Capacity	*500 MCM Cu
Jaw Opening	1"

## REC-CN758

6 Ton Compression Tool



**SERIES 7**  
PRO LINE

### FEATURES

- Optimized hydraulics offer 20% faster advance and 30% faster retraction speeds than previous generation tools.
- Patent pending Auto-Retract feature provides a user-selectable ON/OFF switch to enable or disable automatic cycle retraction. Auto-Retract can also be stopped mid-cycle to speed repeat operation.
- Open "C" head design allows user to place compression head over the connector without having to close a latch before starting a compression cycle.
- Head rotates 180° for optimum maneuverability in tight work spaces.



### SPECIFICATIONS

Crimping Force	6 Ton
Weight	10.8 lbs. (4.9 kg)
Size	15.4"L x 10.6"H x 3.3"W 391mm x 269mm x 85mm

### CRIMPING ESTIMATES

Material	Cycles
4/0-4/0 H-Tap	600
500 MCM Cu	550

### CONNECTOR RANGE

Lugs & Splices	#8-500 MCM Cu #8-350 MCM Al
H-Taps	Up to 4/0-4/0

# BATTERY POWERED COMPRESSION TOOLS

## SL-7630

6.2 Ton Dieless Compression Tool



### FEATURES

- Four self-contained crimping nibs eliminate the need for individual die sets.
- Head rotates 180° for optimum maneuverability in tight work spaces.



### SPECIFICATIONS

Crimp Force	6.2 Ton
Weight	11.0 lbs. (5.0 kg)
Size	17.8"L x 5.5"H x 3.0"W 454mm x 140mm x 77mm

### CRIMPING ESTIMATES

Material	Cycles
500 MCM Cu	425

### CONNECTOR RANGE

*Lugs & Splices	#6 AWG-500 MCM Cu #8-350 MCM Al
-----------------	------------------------------------

**\*NOTE:** The tool is designed to crimp Anderson Style connectors. Other brand connectors manufactured to ANSI specifications C119.4 can be used. For range-taking connectors, the cable must be maximum size specified for the connector. Consult your connector manufacturer for dieless applications.

## SL-7750

6.2 Ton Streamline Dieless Compression Tool



### FEATURES

- Flip-top latched head allows for easy cable positioning and removal.
- Four self-contained crimping nibs eliminate the need for individual die sets.
- Head rotates 180° for optimum maneuverability in tight work spaces.



### SPECIFICATIONS

Crimp Force	6.2 Ton
Weight	11.4 lbs. (5.2 kg)
Size	18.2"L x 5.5"H x 3.0"W 463mm x 140mm x 78mm

### CRIMPING ESTIMATES

Material	Cycles
500 MCM Cu	425

### CONNECTOR RANGE

*Lugs & Splices	#6 AWG-750 MCM Cu #8-350 MCM Al
-----------------	------------------------------------

**\*NOTE:** The tool is designed to crimp Anderson Style connectors. Other brand connectors manufactured to ANSI specifications C119.4 can be used. For range-taking connectors, the cable must be maximum size specified for the connector. Consult your connector manufacturer for dieless applications.

# BATTERY POWERED COMPRESSION TOOLS



## REC-7630

6.2 Ton Dieless Compression Tool



**SERIES 7**  
PRO LINE

### FEATURES

- Optimized hydraulics offer 20% faster advance and 30% faster retraction speeds than previous generation tools.
- Patent pending Auto-Retract feature provides a user-selectable ON/OFF switch to enable or disable automatic cycle retraction. Auto-Retract can also be stopped mid-cycle to speed repeat operation.
- Four self-contained crimping nibs eliminate the need for individual die sets.
- Head rotates 180° for optimum maneuverability in tight work spaces.



### SPECIFICATIONS

Crimp Force	6.2 Ton
Weight	11.9 lbs. (5.4 kg)
Size	15.6"L x 11.6"H x 3.3"W 397mm x 297mm x 85mm

### CRIMPING ESTIMATES

Material	Cycles
500 MCM Cu	450

### CONNECTOR RANGE

*Lugs & Splices	#6 AWG-500 MCM Cu #8-350 MCM Al
-----------------	------------------------------------

**\*NOTE:** The tool is designed to crimp Anderson Style connectors. Other brand connectors manufactured to ANSI specifications C119.4 can be used. For range-taking connectors, the cable must be maximum size specified for the connector. Consult your connector manufacturer for dieless applications.

## REC-7750

6.2 Ton Dieless Compression Tool



**SERIES 7**  
PRO LINE

### FEATURES

- Optimized hydraulics offer 20% faster advance and 30% faster retraction speeds than previous generation tools.
- Patent pending Auto-Retract feature provides a user-selectable ON/OFF switch to enable or disable automatic cycle retraction. Auto-Retract can also be stopped mid-cycle to speed repeat operation.
- Flip-top latched head allows for easy cable positioning and removal.
- Four self-contained crimping nibs eliminate the need for individual die sets.
- Head rotates 180° for optimum maneuverability in tight work spaces.



### SPECIFICATIONS

Crimp Force	6.2 Ton
Weight	12.1 lbs. (5.5 kg)
Size	16.0"L x 11.6"H x 3.3"W 406mm x 296mm x 85mm

### CRIMPING ESTIMATES

Material	Cycles
500 MCM Cu	450

### CONNECTOR RANGE

*Lugs & Splices	#6 AWG-750 MCM Cu #8-350 MCM Al
-----------------	------------------------------------

**\*NOTE:** The tool is designed to crimp Anderson Style connectors. Other brand connectors manufactured to ANSI specifications C119.4 can be used. For range-taking connectors, the cable must be maximum size specified for the connector. Consult your connector manufacturer for dieless applications.



# BATTERY POWERED COMPRESSION TOOLS

## REC-7510

12 Ton Compression Tool



**SERIES 7**  
PRO LINE

SPECIFICATIONS	
Crimp Force	12 Ton
Weight	16.3 lbs. (7.4 kg)
Size	17.0"L x 11.3"H x 3.6"W 432mm x 287mm x 91mm

CRIMPING ESTIMATES	
Material	Cycles
750 MCM Cu	145
500 MCM Cu	155

CONNECTOR RANGE	
Lugs	750 MCM Al/Cu
Splices	750 MCM Al/Cu

### FEATURES

- Optimized hydraulics offer 20% faster advance and 30% faster retraction speeds than previous generation tools.
- Patent pending Auto-Retract feature provides a user-selectable ON/OFF switch to enable or disable automatic cycle retraction. Auto-Retract can also be stopped mid-cycle to speed repeat operation.
- Protective rubber boot on "C" head helps prevent accidental contact with energized circuits.
- Designed for use in single-handed operation in overhead line applications.
- Accepts all "U" type industry standard die sets.
- Open "C" head design allows user to place compression head over the connector without having to close a latch before starting a compression cycle.
- Head rotates 180° for optimum maneuverability in tight work spaces.



# BATTERY POWERED COMPRESSION TOOLS



## REC-7430

12 Ton Compression Tool



**SERIES 7**  
PRO LINE

### FEATURES

- Optimized hydraulics offer 20% faster advance and 30% faster retraction speeds than previous generation tools.
- Patent pending Auto-Retract feature provides a user-selectable ON/OFF switch to enable or disable automatic cycle retraction. Auto-Retract can also be stopped mid-cycle to speed repeat operation.
- Protective rubber boot on "C" head helps prevent accidental contact with energized circuits.
- Designed for use in single-handed operation in overhead line applications.
- Accepts all "U" type industry standard die sets.
- Open "C" head design allows user to place compression head over the connector without having to close a latch before starting a compression cycle.
- Head rotates 180° for optimum maneuverability in tight work spaces.



### SPECIFICATIONS

Crimp Force	12 Ton
Weight	15.4 lbs. (7.0 kg)
Size	16.2"L x 11.5"H x 3.6"W 413mm x 291mm x 91mm

### CRIMPING ESTIMATES

Material	Cycles
750 MCM Cu	145

### CONNECTOR RANGE

Lugs	750 MCM Cu/Al
Splices	600 MCM Cu/Al

## REC-7510K

12 Ton Compression Tool



**SERIES 7**  
PRO LINE

### FEATURES

- Optimized hydraulics offer 20% faster advance and 30% faster retraction speeds than previous generation tools.
- Patent pending Auto-Retract feature provides a user-selectable ON/OFF switch to enable or disable automatic cycle retraction. Auto-Retract can also be stopped mid-cycle to speed repeat operation.
- Accepts all WH-2 and PH-2 Kearney style die sets.
- Open "C" head design allows user to place compression head over the connector without having to close a latch before starting a compression cycle.
- Head rotates 180° for optimum maneuverability in tight work spaces.



### SPECIFICATIONS

Crimp Force	12 Ton
Weight	16.7 lbs. (7.6 kg)
Size	16.4"L x 11.5"H x 3.6"W 418mm x 293mm x 91mm

### CRIMPING ESTIMATES

Material	Cycles
750 MCM Cu	145

### CONNECTOR RANGE

Lugs	1033 ACSR
Splices	477 ACSR

# BATTERY POWERED COMPRESSION TOOLS

## SL-C71000

12 Ton Dieless Compression Tool



### FEATURES

- Protective rubber boot on “C” head helps prevent accidental contact with energized circuits.
- Die-less indented style crimping nib eliminates the need for individual die sets.
- Head rotates 180° for optimum maneuverability in tight work spaces.



### SPECIFICATIONS

Crimp Force	12 Ton
Weight	22.9 lbs. (10.4 kg)
Size	22.9”L x 5.6”H x 4.0”W 581mm x 142xmm x 103mm

### CRIMPING ESTIMATES

Material	Cycles
1000 MCM Cu	125

### CONNECTOR RANGE

Lugs & Splices	#8 AWG-1000 MCM Cu #8 AWG-1000 MCM Al
----------------	--

# BATTERY POWERED COMPRESSION TOOLS

## SL-C7510

12 Ton Compression Tool w/"C" Head



**S7**

### FEATURES

- Protective rubber boot on "C" head helps prevent accidental contact with energized circuits.
- Accepts all "U" type industry standard die sets.
- Open "C" head design allows user to place compression head over the connector without having to close a latch before starting a compression cycle.
- Head rotates 180° for optimum maneuverability in tight work spaces.



### SPECIFICATIONS

Crimp Force	12 Ton
Weight	15.2 lbs. (6.9 kg)
Size	19.7"L x 6.4"H x 4.0"W 510mm x 162mm x 103mm

### CRIMPING ESTIMATES

Material	Cycles
500 MCM Cu	140
750 MCM Cu	135

### CONNECTOR RANGE

Lugs & Splices	750 MCM Cu
----------------	------------

## SL-7510K

12 Ton Compression Tool w/"C" Head



**S7**

### FEATURES

- Protective rubber boot on "C" head helps prevent accidental contact with energized circuits.
- Accepts all WH-2 and PH-2 Kearney style die sets.
- Open "C" head design allows user to place compression head over the connector without having to close a latch before starting a compression cycle.
- Head rotates 180° for optimum maneuverability in tight work spaces.



### SPECIFICATIONS

Crimp Force	12 Ton
Weight	14.7 lbs. (6.7 kg)
Size	19.1"L x 6.5"H x 4.0"W 486mm x 166mm x 103mm

### CRIMPING ESTIMATES

Material	Cycles
500 MCM Cu	135
750 MCM Cu	125

### CONNECTOR RANGE

Lugs	1033 MCM
Splices	477 ACSR

# BATTERY POWERED COMPRESSION TOOLS

## SL-7610

15 Ton Compression Tool



### FEATURES

- Protective rubber boot on “C” head helps prevent accidental contact with energized circuits.
- Accepts all “P” type industry standard die sets, as well as “U” type industry standard dies with the use of the PU-15 die adapter.
- Head rotates 180° for optimum maneuverability in tight work spaces.



### SPECIFICATIONS

Crimp Force	15 Ton
Weight	17.6 lbs. (8.0 kg)
Size	25.0”L x 5.3”H x 4.0”W 635mm x 136mm x 103mm

### CRIMPING ESTIMATES

	BP-185
1000 MCM Cu	40

### CONNECTOR RANGE

Aluminum	#8 AWG-1250 MCM
Copper	#8 AWG-1500 MCM
H-Tap	Up to 750/750

### OPTIONAL ACCESSORIES

PU-15 “U” Die Adapter

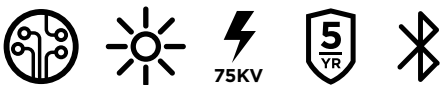
## SL-C7610

15 Ton Compression Tool



### FEATURES

- Protective rubber boot on “C” head helps prevent accidental contact with energized circuits.
- Accepts all “P” type industry standard die sets, as well as “U” type industry standard dies with the use of the PU-15 die adapter.
- Open “C” head design allows user to place compression head over the connector without having to close a latch before starting a compression cycle.
- Head rotates 180° for optimum maneuverability in tight work spaces.



### SPECIFICATIONS

Crimp Force	15 Ton
Weight	20.7 lbs. (9.4 kg)
Size	22.3”L x 6.0”H x 4.0”W 566mm x 153mm x 103mm

### CRIMPING ESTIMATES

Material	Cycles
750 MCM Cu	95

### CONNECTOR RANGE

Aluminum	#8 AWG - 1250 MCM
Copper	#8 AWG - 1500 MCM
H-Tap	Up to 750/750

### OPTIONAL ACCESSORIES

PU-15 “U” Die Adapter





---

# BATTERY POWERED CUTTING TOOLS

# BATTERY POWERED CUTTING TOOLS

## ECO-7336B

6 Ton Streamline Cutting Tool



### FEATURES

- Lightweight ergonomic design
- One handed operation
- Rotational head



### SPECIFICATIONS

Cutting Force	6 Ton
Weight	6.8 lbs. (3.1 kg)
Size	3.7"L x 19.25"H x 2.8"W 94mm x 489mm x 71mm

### CUTTING ESTIMATES

Material	Cycles
336 ACSR	200

### CUTTING CAPACITIES

ACSR	336 MCM
Aluminum	Up to 1"
Copper	500 MCM
Standard Guy Wire	3/8"

The **ECO-7336B** streamline battery powered cutting tool has a powerful 6 ton output for handling the most difficult of tasks. The ECO-7336B is designed for steel core conductor, but also has the added feature of being able to handle copper and aluminum conductor up to 500 MCM.

## ECO-7500

6 Ton Streamline Cutting Tool



### FEATURES

- Lightweight ergonomic design
- One handed operation
- Rotational head



### SPECIFICATIONS

Cutting Force	6 Ton
Weight	6.8 lbs. (3.1 kg)
Size	3.7"L x 19.25"H x 2.8"W 94mm x 489mm x 71mm

### CUTTING ESTIMATES

Material	Cycles
500 MCM Al	200

### CUTTING CAPACITIES

ACSR	Do Not Cut
Aluminum	Up to 1"
Copper	Up to 500 MCM
Standard Guy Wire	Do Not Cut

The **ECO-7500**, which is designed for copper and aluminum conductor only, provides a much cleaner cut when working with non-ACSR conductor.

## SL-S720

6 Ton Cutting Tool



**S7**

### FEATURES

- Latched cutting head for superior shear strength on tough materials.
- Head rotates 180° for optimum maneuverability in tight work spaces.



### SPECIFICATIONS

Cutting Force	6 Ton
Weight	7.7 lbs. (3.5 kg)
Size	15.5"L x 4.8"H x 3.1"W 394mm x 123mm x 79mm

### CUTTING ESTIMATES

Material	Cycles
336 ACSR	225
1/2" Wire Rope	275
1/2" Rebar	275
1/2" Ground Rod	275
3/8" Guy Wire	225

### CUTTING CAPACITIES

Wire Rope	5/8"
Rebar (Sc 40)	1/2"
Rebar (Sc 60)	3/8"
Ground Rod	1/2"
ACSR	477 MCM
Guy Wire	3/8"

## REC-730Y

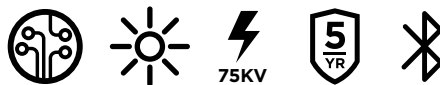
6.6 Ton Scissor-Type Cutting Tool



**SERIES 7**  
PRO LINE

### FEATURES

- Optimized hydraulics offer 20% faster advance and 30% faster retraction speeds than previous generation tools.
- Patent pending Auto-Retract feature provides a user-selectable ON/OFF switch to enable or disable automatic cycle retraction. Auto-Retract can also be stopped mid-cycle to speed repeat operation.
- Latched cutting head for superior shear strength on tough materials.
- Head rotates 180° for optimum maneuverability in tight work spaces.



### SPECIFICATIONS

Cutting Force	6.6 Ton
Weight	9.2 lbs. (4.2 kg)
Size	13.3"L x 10.6"H x 3.3"W 339mm x 269mm x 85mm

### CUTTING ESTIMATES

Material	Cycles
336 ACSR	350

### CUTTING CAPACITIES

ACSR	336 MCM
Copper	500 MCM
Aluminum	1.18" OD
Standard Guy Wire	3/8"
Bar	Do Not Cut

\*NOTE: This tool is not recommended for cutting 4/0 Penguin or 3/0 Pigeon ACSR Cables

# BATTERY POWERED CUTTING TOOLS

## REC-734YC

6.6 Ton Scissor-Type Cutting Tool



**SERIES 7**  
PRO LINE

### FEATURES

- Optimized hydraulics offer 20% faster advance and 30% faster retraction speeds than previous generation tools.
- Patent pending Auto-Retract feature provides a user-selectable ON/OFF switch to enable or disable automatic cycle retraction. Auto-Retract can also be stopped mid-cycle to speed repeat operation.
- Latched cutting head for superior shear strength on tough materials.
- Open scissor type cutting blades allow for easy cable insertion and positioning without the need to latch the head closed prior to cutting.
- Head rotates 180° for optimum maneuverability in tight work spaces.



### SPECIFICATIONS

Cutting Force	6.6 Ton
Weight	8.8 lbs. (4.0 kg)
Size	15.6"L x 10.6"H x 3.3"W 396mm x 269mm x 85mm

### CUTTING ESTIMATES

Material	Cycles
500 MCM Cu	345

### CUTTING CAPACITIES

Aluminum	1.4" OD
Copper	800 MCM
*ACSR	Do Not Cut

\*NOTE: DO NOT CUT STEEL.

## REC-760YC

6.6 Ton Scissor-Type Cutting Tool



**SERIES 7**  
PRO LINE

### FEATURES

- Optimized hydraulics offer 20% faster advance and 30% faster retraction speeds than previous generation tools.
- Patent pending Auto-Retract feature provides a user-selectable ON/OFF switch to enable or disable automatic cycle retraction. Auto-Retract can also be stopped mid-cycle to speed repeat operation.
- Latched cutting head for superior shear strength on tough materials.
- Open scissor type cutting blades allow for easy cable insertion and positioning without the need to latch the head closed prior to cutting.
- Head rotates 180° for optimum maneuverability in tight work spaces.



### SPECIFICATIONS

Cutting Force	6.6 Ton
Weight	9.2 lbs. (4.2 kg)
Size	16.7"L x 10.6"H x 3.3"W 424mm x 269mm x 85mm

### CUTTING ESTIMATES

Material	Cycles
500 MCM Cu	345

### CUTTING CAPACITIES

Aluminum	2" O.D.
Copper	500 MCM*
ACSR	Do Not Cut

\*NOTE: DO NOT CUT STEEL. Will not cut all 500 MCM Copper. Consult factory for applications.

## SL-S740L

8 Ton Cutting Tool



### FEATURES

- Latched cutting head for superior shear strength on tough materials.
- Head rotates 180° for optimum maneuverability in tight work spaces.



**\*NOTE:** DO NOT CUT EHS GUY WIRE OR CASE HARDENED STEEL RODS. SEE REC-S624CC, S-24CC, SP-24CC, S-32CC OR SP-32CC1.

### SPECIFICATIONS

Cutting Force	8 Ton
Weight	13.0 lbs. (5.9 kg)
Size	20.1"L x 5.2"H x 4.0"W 512mm x 134mm x 103mm

### CUTTING ESTIMATES

Material	Cycles
795 ACSR	135
3/4" Wire Rope	95
5/8" Rebar	165
5/8" Ground Rod	165
3/8" Guy Wire	200

### CUTTING CAPACITIES

Wire Rope	3/4" *
Rebar (Sc 40)	5/8"
Rebar (Sc 60)	5/8"
Ground Rod	5/8"
ACSR	1590 MCM
Standard Guy Wire	5/8"
Cu/Al Cable	1.5"

## REC-S740L

8 Ton Cutting Tool



**SERIES 7**  
PRO LINE

### FEATURES

- Optimized hydraulics offer 20% faster advance and 30% faster retraction speeds than previous generation tools.
- Patent pending Auto-Retract feature provides a user-selectable ON/OFF switch to enable or disable automatic cycle retraction. Auto-Retract can also be stopped mid-cycle to speed repeat operation.
- Latched cutting head for superior shear strength on tough materials.
- Head rotates 180° for optimum maneuverability in tight work spaces.



**\*NOTE:** DO NOT CUT EHS GUY WIRE OR CASE HARDENED STEEL RODS. SEE REC-S624CC, S-24CC, SP-24CC, S-32CC OR SP-32CC1.

### SPECIFICATIONS

Cutting Force	8 Ton
Weight	14.3 lbs. (6.5 kg)
Size	17"L x 11.5"H x 3.6"W 445mm x 293mm x 91mm

### CUTTING ESTIMATES

Material	Cycles
795 ACSR	135
3/4" Wire Rope	95
5/8" Rebar	165
5/8" Ground Rod	165
3/8" Guy Wire	200

### CUTTING CAPACITIES

Wire Rope	3/4"
Rebar (Sc 40)	5/8"
Rebar (Sc 60)	5/8"
Ground Rod	5/8"
ACSR	1590 MCM
Standard Guy Wire	5/8"
Cu/Al Cable	1.5"



# BATTERY POWERED CUTTING TOOLS

## REC-S724H

8 Ton Cutting Tool



**SERIES 7**  
PRO LINE

### FEATURES

- Optimized hydraulics offer 20% faster advance and 30% faster retraction speeds than previous generation tools.
- Patent pending Auto-Retract feature provides a user-selectable ON/OFF switch to enable or disable automatic cycle retraction. Auto-Retract can also be stopped mid-cycle to speed repeat operation.
- Latched cutting head for superior shear strength on tough materials.
- Head rotates 180° for optimum maneuverability in tight work spaces.



### SPECIFICATIONS

Cutting Force	8 Ton
Weight	11.0 lbs (5.0 kg)
Size	13.0"L x 14.7"H x 3.3"W 335mm x 375mm x 85mm

### CUTTING ESTIMATES

Material	Cycles
336 ACSR	375
1/2" Wire Rope	350
1/2" Rebar	350
1/2" Ground Rod	350
Guy Wire	375

### CUTTING CAPACITIES

Wire Rope	7/8"
Rebar (Sc 40)	5/8"
Rebar (Sc 60)	1/2"
Ground Rod	5/8"
ACSR	477 MCM
Guy Wire	5/8"
Guy Wire (EHS)	7/16"

**\*NOTE:** DO NOT CUT EHS GUY WIRE OR CASE HARDENED STEEL RODS. SEE REC-S624CC, S-24CC, SP-24CC, S-32CC OR SP-32CC1.

## REC-S724CC

8 Ton Cutting Tool



**SERIES 7**  
PRO LINE

### FEATURES

- Optimized hydraulics offer 20% faster advance and 30% faster retraction speeds than previous generation tools.
- Patent pending Auto-Retract feature provides a user-selectable ON/OFF switch to enable or disable automatic cycle retraction. Auto-Retract can also be stopped mid-cycle to speed repeat operation.
- Latched cutting head for superior shear strength on tough materials.
- Specifically designed anvil blades made to cut EHS guy wire up to 9/160
- Head rotates 180° for optimum maneuverability in tight work spaces.



### SPECIFICATIONS

Cutting Force	8 Ton
Weight	11.0 lbs. (5.0 kg)
Size	13.1"L x 11.0"H x 3.3"W 334mm x 280mm x 85mm

### CUTTING ESTIMATES

Material	Cycles
477 ACSR	375
1/2" Rebar	350
1/2" Ground Rod	350
3/8" Guy Wire	350

### CUTTING CAPACITIES

ACSR	477 MCM
Standard Guy Wire	5/8"
EHS Guy Wire	9/16"
Ground Rod	5/8"
Rebar (Sc 40)	5/8"

## REC-7105YC

9 Ton Scissor-Type Cutting Tool



**SERIES 7**  
PRO LINE

### SPECIFICATIONS

Cutting Force	9 Ton
Weight	19.8 lbs. (9.0 kg)
Size	23.6"L x 13.7"H x 3.9"W 600mm x 348mm x 100mm

### CUTTING ESTIMATES

Material	Cycles
1000 MCM Cu	150

### CUTTING CAPACITIES

Aluminum	3.7"
Telecommunication	3.7"
Lead Sheath	2.5"
* ACSR	Do Not Cut

### FEATURES

- Optimized hydraulics offer 20% faster advance and 30% faster retraction cycles than previous generation tools for an overall reduction in wait time between compression or cutting cycles.
- Patent pending Auto-Retract feature provides a user-selectable ON/OFF switch to enable or disable automatic cycle retraction. Auto-Retract can also be stopped mid-cycle to speed repeat operation.
- Open scissor type cutting blades allow for easy cable insertion and positioning without the need to latch the head closed prior to cutting.
- Sidebar style handles designed for stability and ergonomic grip.
- Head rotates 180° for optimum maneuverability in tight work spaces.



\*NOTE: DO NOT CUT STEEL.

# BATTERY POWERED CUTTING TOOLS

## SL-795YC

9 Ton Streamline Cutting Tool



SPECIFICATIONS	
Cutting Force	9 Ton
Weight	20.7 lbs. (9.4 kg)
Size	26.1"L x 9.8"H x 4.7"W 663mm x 250mm x 120mm
CUTTING ESTIMATES	
Material	Cycles
1000 MCM Cu	150
CUTTING CAPACITIES	
Aluminum	3.7"
Telecommunication	3.7"
Lead Sheath	2.5"
*ACSR	Do Not Cut

### FEATURES

- Open scissor type cutting blades allow for easy cable insertion and positioning without the need to latch the head closed prior to cutting.
- Sidebar style handles designed for stability and ergonomic grip.
- Head rotates 180° for optimum maneuverability in tight work spaces.



\*NOTE: DO NOT CUT STEEL.

## REC-750M

Gear-Driven Cable Cutter



### FEATURES

- LED status indicator for battery life.
- Overload circuit protection in the event maximum cable size is exceeded.
- Auto retract feature lets operator choose how far the blade retracts for maximum efficiency on repetitive cutting operations.



### SPECIFICATIONS

Weight	5.5 lbs. (2.5 kg)
Size	14.8"L x 4.6"H x 5.5"W 375mm x 117mm x 140mm
Jaw Opening	2.0"

### CUTTING ESTIMATES

Material	Cycles
500 MCM Cu	240
750 MCM Cu	135

### CUTTING CAPACITIES

Aluminum	1500 MCM
Copper	1000 MCM

# BATTERY POWERED CUTTING TOOLS

## REC-754ACM

Gear-Driven Cable Cutter



### FEATURES

- Improved ergonomic handle
- 2-1/8" Jaw opening
- Cuts up to 1500 MCM Al
- One hand operation
- Safety lockout switch
- Upgraded motor and gear system



### SPECIFICATIONS

Weight	7.2 lbs. (3.3 kg)
Size	16"L x 4"H x 4.5"W
	406mm x 102mm x 114mm
Jaw Opening	2-1/8"

### CUTTING ESTIMATES

Material	Cycles
1000 MCM Al	125
1500 MCM Cu	100

### CUTTING CAPACITIES

Aluminum	1500 MCM
Copper	1000 MCM
ACSR	Do Not Cut

The **REC-754ACM** was designed to cut stranded copper and aluminum cables. The jaws will accept a maximum of 1500 MCM aluminum. The operation of this tool is the same as the REC-54M, but it has sharper blades for cutting only non-ferrous materials. Do Not cut steel with this model, or blade damage will occur. The REC-54ACM comfortably fits into the lineman's gloved hand, and repetitive ratcheting movement is entirely eliminated. The moveable blade has wide gear teeth for extra power and full cutting traction. Gear guides are attached on both ends of the movable blade to align the gear teeth with the internal pinion gear.

## REC-754M

Gear-Driven Cable Cutter



### FEATURES

- Improved ergonomic handle
- 2-1/8" Jaw opening
- Cuts up to 1590 ACSR
- One hand operation
- Safety lockout switch
- Upgraded motor and gear system



### SPECIFICATIONS

Weight	8 lbs. (3.6 kg)
Size	15.5"L x 4.5"H x 5"W
	394mm x 114mm x 127mm
Jaw Opening	2-1/8"

### CUTTING ESTIMATES

Material	Cycles
1590 MCM ACSR	100

### CUTTING CAPACITIES

Aluminum	1500 MCM
Copper	750 MCM
ACSR	1590 MCM

The **REC-754M** is a heavy duty cable cutter primarily used to cut ACSR. Huskie Tools has notched both cutting blades to avoid the denting of the cutting surfaces when steel strand is encountered. The handle rotates 90° to the blade to achieve a more ergonomic and comfortable cutting position. This tool also incorporates a blade retainer, which keeps the blades from spreading apart while cutting steel cables.

**NOTE:** The REC-54M is not intended to cut guy wires, ground rod or bolts. FOR CLEAN CUTS ON COPPER & ALL ALUMINUM CABLE PLEASE REFER THE REC-50M & THE REC-54ACM.



## REC-Y733M

### Gear-Driven Cable Cutter



#### FEATURES

- LED status indicator for battery life.
- Overload circuit protection in the event maximum cable size is exceeded.
- Auto retract feature lets operator choose how far the blade retracts for maximum efficiency on repetitive cutting operations.



#### SPECIFICATIONS

Weight	6.6 lbs. (3.0 kg)
Size	14.5"L x 4.6"H x 5.5"W 368mm x 117mm x 140mm
Jaw Opening	1.25"

#### CUTTING ESTIMATES

Material	Cycles
477 ACSR	250

#### CUTTING CAPACITIES

Aluminum	1.25"
Copper	500 MCM
ACSR	636 MCM

## REC-S3550

### 13 Ton Cutting Tool



#### FEATURES

- Flip-top latching head
- One hand operation
- Rotational head
- Rapid advance
- Ergonomically designed for balance & grip
- Weather resistant housing
- Overload bypass protection



#### SPECIFICATIONS

Cutting Force	13 Ton
Weight	23 lbs. (10.4 kg)
Size	21.5"L x 10.5"H x 3.5"W 546mm x 267mm x 89mm

#### CUTTING ESTIMATES

Material	Cycles
Wire Rope	60
Rebar, Ground & Anchor Rod	45
Cu & Al Wire	35
ACSR	45
Standard Guy Wire	30

#### CUTTING CAPACITIES

Soft Steel Bolts	1-1/4"
Rebar, Ground & Anchor Rod	3/4"
Cu & Al Wire	2"
Standard Guy Wire	3/4"
Wire Rope	1"

The **REC-S3550** cuts ACSR, guy wire, wire rope, and ground rod. Powerful and portable with a 2" jaw opening. A latch-type jaw swings open to accept material to be cut. The head can be rotated for proper positioning of rod or cable. This is our most versatile cutter patterned after our S-55B hand operated cutter.

**NOTE:** WILL CUT ALL 795 ACSR CABLE, INCLUDING DRAKE.

# SERIES 7

PRO LINE



## POWER & DURABILITY

Huskie Power Tools provide rugged durable performance based on a powerful 18V/5.0 Ah battery platform. Improved battery and tool electronics constantly monitor tool performance to prevent overheating and over-discharge conditions to extend tool life. Many Series 7 Power Tools also feature advanced protection against dirt and water, enhanced electric speed control, and long lasting brushless motors



---

# POWER TOOLS

# POWER TOOLS

## HTP-RTH

Rotary Hammer



### FEATURES

- Dual Function: Rotary Hammer or Drill/Driver Mode.
- 5-stage torque clutch, plus drilling position.
- Unique handle design improves balance and ergonomics.
- Utilizes common SDS-Plus drill chuck platform.
- Includes a 1/4" hex drive adapter.
- Electric braking and reverse mode.
- Integrated LED work light.



SPECIFICATIONS		
Motor Voltage		18V DC
Weight		5.5 lbs. (2.5 kg)
Size		10.0"L x 10.5"H x 3.0"W 254mm x 267mm x 76mm
Torque Setting	1	13.3 in/lb. (1.5 Nm)
	2	22.1 in/lb. (2.5 Nm)
	3	30.1 in/lb. (3.4 Nm)
	4	38.9 in/lb. (4.4 Nm)
	5	47.9 in/lb. (5.4 Nm)
	Drilling	119.5 in/lb. (13.5 Nm)
Speed at no load (rpm)		0-1,250 rpm
Blows rate per minute (bpm)		4,750 bpm

## HTP-HDD

Hammer Drill Driver



### FEATURES

- 18-Stage Clutch, plus drilling position.
- Speed Control function offers versatility across wide variety of applications.
- Ultra-hard tungsten-carbide jaw tips provide improved tightening strength and reduced wear.
- Compact body design fits into tight spaces.
- Electric braking & reverse mode.
- Integrated LED work light.



SPECIFICATIONS		
Motor Voltage		18V DC
Weight		5.5 lbs. (2.5 kg)
Size		9.0"L x 9.5"H x 3.0"W 229mm x 241mm x 76mm
Speed at no Load	Low	30 - 470 (rpm)
	High	70 - 1,580 (rpm)
Chuck Capacity		1/2"
Clutch Torque (18-stage clutch)		9 - 61 in/lb. (1.0 Nm - 6.9 Nm)

## HTP-IPW

Impact Wrench



**SERIES 7**  
PRO LINE

### FEATURES

- Powerful, yet compact lightweight design.
- Durable front bumper guard protects tool and work surfaces.
- Variable speed trigger for smooth starts.
- Integrated battery capacity indicator.
- Electric braking and reverse mode.



### SPECIFICATIONS

Motor Voltage	18V DC
Weight	5.7 lbs. (2.6 kg)
Size	8.5"L x 9.5"H x 3.0"W 216mm x 241mm x 76mm
Speed at no Load	0 - 1,550 rpm
Max Torque	345 ft/lb. (470 Nm)
Impact per Minute	0 - 2,400 ipm

## HTP-CID

Impact Driver



**S7**

### FEATURES

- Ultra-compact design fits into tight spaces.
- Powerful long-lasting brushless motor.
- Self-Drilling Screw Mode prevents threads or breaking fasteners.
- Multiple operating modes provide exceptional speed and torque control.
- Electric braking and reverse mode.
- Integrated LED work light.



### SPECIFICATIONS

Motor Voltage		18V DC
Weight		3.7 lbs. (1.6 kg)
Size		5.0"L x 9.5"H x 3.0"W 127mm x 241mm x 76mm
No Load Speed	Slow mode	0 - 950 (rpm)
	Medium mode	0 - 1,450 (rpm)
	High mode	0 - 2,500 (rpm)
	Self-drilling screw mode	0 - 1,400 (rpm)
Impact per Minute	Slow mode	0 - 1,900 (ipm)
	Medium mode	0 - 2,900 (ipm)
	High mode	0 - 3,100 (ipm)
	Self-drilling screw mode	0 - 1,200 (ipm)
Max Torque		120 ft/lb. (163 Nm)



# POWER TOOLS

## HTP-AGR

Angle Grinder



S7

### FEATURES

- Lightweight.
- Optional Cutting Guard.
- Spindle lock for easy disc changes.
- On start lock prevention function prevents sudden starts.



SPECIFICATIONS	
Motor Voltage	18V DC
Weight	5.3 lbs. (2.4 kg)
Size	13.5"L x 5.0"H x 5.5"W 343mm x 127mm x 140mm
Max. Wheel Diameter	4.5"
Speed at no Load	10,000 (rpm)

## HTP-BSW

Band Saw



S7

### FEATURES

- LED work light illuminates the cut line.
- Easy to grip handle.
- Adjustable stopper plate.
- Easy blade replacement with lever.
- High cutting efficiency.



SPECIFICATIONS	
Motor Voltage	18V DC
Weight	8.9 lbs. (4.0 kg)
Size	15.0"L x 9.4"H x 7.8"W 382mm x 240mm x 199mm
Max. Cutting Capacity	Round Stock 2.5" (63 mm) Rectangular Stock 2.25" x 2.5" (56mm x 63mm)
Blade Speed (no load)	Low: 394 ft/min (120 m/min) Medium: 460 ft/min (140 m/min) High: 530ft/min (162 m/min)

## HTP-BLR

Blower



### FEATURES

- Cordless
- Powerful air volume and wind speed
- Variable air control



### SPECIFICATIONS

Motor Voltage	18V DC
Weight	4.6 lbs. (2.1 kg)
Size	24.0"L x 9.0" H x 6.0"W 609mm x 228mm x 152mm
Air Volume	105 cfm
Wind Speed	155 mph

## HTP-FLD

LED Floodlight



**SERIES 7**  
PRO LINE



### FEATURES

- 2-sided light adjustable light
- 3 levels of brightness



### SPECIFICATIONS

Motor Voltage	18V DC
Weight	1.3 lbs. (0.6 kg)
Size	4.9"L x 12.3"H x 3.8"W 125mm x 312mm x 96mm
Light Flux	1,500 lumens
Brightness	3,000 lux (at 1.3 ft)
Light Angle	0 to 270 degrees

# SERIES 6 COMPRESSION TOOLS

THE CHOICE OF  
PROFESSIONALS.





# BATTERY POWERED COMPRESSION TOOLS

SERIES 6

# BATTERY POWERED COMPRESSION TOOLS

Series 6

## ECO-EZ

### 6 Ton Streamline Compression Tool



#### FEATURES

- 6 Optional Heads to Choose From
- 1 Year Warranty
- Lightweight Ergonomic Design
- Hotstick Tool Available
- Accepts All "W" & "X" Type Dies
- One Hand Operation
- Rotational Head
- Audible Bypass when Predetermined Pressure is Achieved
- Tested Up To 75kV
- Compatible with All Huskie 14.4V Batteries
- Brush Protection Guards

#### OPTIONAL ACCESSORIES



#### SPECIFICATIONS

Crimp Force	6 Ton
Weight	6.5 lbs. with Battery
Size	3.7"L x 20.5"H x 2.8"W

#### CRIMPING ESTIMATES

Material	Cycles
4/0-4/0 H-Tap	100

#### CONNECTOR RANGE

Lugs & Splices	#8-500 MCM Cu #8-300 MCM Al
H-Taps	Up to 4/0-4/0

#### CUTTING CAPACITIES

ACSR	Up to 4/0
Std. Guy Wire	3/8"
Soft Locks	3/8"
Soft Steel Bolts	3/8"

The **ECO-EZ** Streamline compression tool has a powerful 6 ton output. A swivel head design allows the jaws to rotate 180°. Operates on 14.4 volt battery used in all of the Huskie ROBO Tools.

## IL-ND

### 6 Ton Streamline Compression Tool



#### FEATURES

- 3 Optional Heads to Choose From
- 3 Year Warranty
- Lightweight Ergonomic Design
- Accepts all "W" & "X" Type Dies
- One Hand Operation
- Rotational Head
- Audible Bypass when Predetermined Pressure is Achieved
- Tested up to 75kV
- Compatible with all Huskie 14.4V Batteries
- Brush Protection Guards

#### OPTIONAL ACCESSORIES



#### SPECIFICATIONS

Crimp Force	6 Ton
Weight	7.3 lbs. with Battery
Size	3.7"L x 21"H x 3.1"W

#### CRIMPING ESTIMATES

Material	Cycles
4/0-4/0 H-Tap	200

#### CONNECTOR RANGE

Lugs & Splices	#8-500 MCM Cu #8-350 MCM Al
H-Taps	Up to 4/0-4/0

The **IL-ND** streamline tool is an upgrade to the ECO-EZ tool. A more robust product with enhancements to the hydraulic system, a heavy duty motor similar to the "SL" tool and a redesigned compression head that utilizes less hydraulic force while delivering a 6 ton output compression force.

# BATTERY POWERED COMPRESSION TOOLS

## SL-BND

6 Ton Streamline Compression Tool  
with Changeable Heads



### FEATURES

- Forged Jaws for Long Life
- Brush Protection Guards
- New Pull-Pin Design for Quick Jaw Change
- Bright White, LED Lights for Working in Low Light Conditions
- 6 Compression Heads to Choose From
- 3 Cutting Heads to Choose From
- One Hand Operation
- Rotational Head
- Audible Bypass when Predetermined Pressure is Achieved
- Tested Up To 75kV
- 5 Year Warranty on Tool, Battery & Charger

### OPTIONAL ACCESSORIES



### SPECIFICATIONS

Crimp Force	6 Ton
Weight	8.2 lbs. with Battery
Size	3.7" L x 22" H x 2.8" W

### CRIMPING ESTIMATES

Material	Cycles
4/0-4/0 H-Tap	200

### CONNECTOR RANGE

Lugs & Splices	#8-500 MCM Cu #8-350 MCM Al
H-Taps	Up to 4/0-4/0

CUTTING CAPACITIES	SLCUT-JAW	SL-CHACSR	SL-CHCUAL
Copper		350 MCM	500 MCM
Aluminum		350 MCM	1" O.D.
ACSR	Up to 4/0	336 MCM	
Std. Guy Wire	Up to 3/8"		
Soft Locks	Up to 3/8"		
Soft Steel Bolts	Up to 3/8"		

The **SL-BND** is a robust streamline tool with a choice of jaw types, including six compression heads, SLXPJ-JAW, SLXMJ-JAW, SLK-JAW, SLND3-JAW, SLO-JAW, or SLBG-JAW. For cutting, use SLCUT-JAW, SL-CHCUAL, or SL-CHACSR. For bending use SLCB-JAW. Quickly change head types with the pull-pin design.



# BATTERY POWERED COMPRESSION TOOLS

Series 6

## SL-BCB

Streamline Cable Bending Tool



### FEATURES

- New Pull-Pin Design for Quick Jaw Change
- Bright White, LED Lights for Working in Low Light Conditions
- Audible Bypass when Predetermined Pressure is Achieved
- Tested Up To 75kV
- 5 Year Warranty on Tool, Battery & Charger

### SPECIFICATIONS

Weight	14.4 lbs. with Battery
Size	7"L x 22"H x 14"W

### BENDING USES

Underground Vaults
Meter Bases
Substation

### BENDING CAPACITY

Cable	1000 MCM CU
-------	-------------

The **SL-CB**, the first of its kind in the electrical utility industry, is a battery powered cable bender. Pull-pin design to change jaws from compression, to cutting, to cable bending. Can be used on secondary or primary conductor in a variety of sizes. Low profile for use in close-quarter environments - underground vaults, meter bases and substation applications. NOTE: Contact cable manufacturer for specified cable bending radii and cable bending requirements.

## REC-B658U

6 Ton Compression Tool



### FEATURES

- Interchangeable Cutter Head
- Rapid Advance
- One Hand Operation
- Tested Up to 75kV
- Rotational Head
- Bright White, LED Lights for Working in Low Light Conditions
- Ergonomically Designed for Balance and Grip
- Weather Resistant Housing
- Audible Bypass when Predetermined Pressure is Achieved
- 5 Year Warranty on Tool, Battery & Charger

### SPECIFICATIONS

Crimp Force	6 Ton
Weight	8.2 lbs. with Battery
Size	14.3"L x 10"H x 3.1"W
Jaw Opening	1.8"

### CRIMPING ESTIMATES

Material	Cycles
#6 CU/AL	250
1/0 CU/AL	195
4/0 CU/AL	150

### CONNECTOR RANGE

Lugs & Splices	#8-500 MCM Cu #8-300 MCM AI
----------------	--------------------------------

### OPTIONAL ACCESSORIES

25 CAT	Cutter Head
HT58CUT	Cutter Die

The **REC-658U** squeezes commonly used service entrance connectors, including lugs, sleeves, H-Taps and C-Taps. A rapid advance feature allows quicker compression cycles. An electronic counter allows service technician to see number of compression cycles made by tool. Accepts "W" or "O" type dies. D3 nest die comes standard with tool. Always consult your connector manufacturer for proper die/connector combinations. REC-658U will accept optional 25CAT cutter head attachment. Quick release pins allow the operator to change between compression and cutter head in one minute with no springs or pins to lose.

# BATTERY POWERED COMPRESSION TOOLS

## REC-B6NDSL

6 Ton Compression Tool  
Changeable Head

### FEATURES

- Rapid Advance
- 6 Compression Heads to Choose From
- 3 Cutting Heads to Choose From
- Brush Protection Guards
- New Pull-Pin Design for Quick Jaw Change
- One Hand Operation
- Tested Up to 75kV
- Rotational Head
- Forged Jaws for Long Life
- Ergonomically designed for Balance and Grip
- Weather Resistant Housing
- Audible Bypass when Predetermined Pressure is Achieved
- 5 Year Warranty on Tool, Battery & Charger

### SPECIFICATIONS

Crimp Force	6 Ton
Weight	9.8 lbs. with Battery
Size	14.3"L x 10"H x 3.1"W

### CRIMPING ESTIMATES

Material	Cycles
#6 CU/AL	250
1/0 CU/AL	200
4/0 CU/AL	150

### CONNECTOR RANGE

Lugs & Splices	#8-500 MCM CU #8-350 MCM AL
H-Taps	Up to 4/0-4/0



CUTTING CAPACITIES	SLCUT-JAW	SL-CHACSR	SL-CHCUAL
Copper	Do not cut	350 MCM	500 MCM
Aluminum	Do not cut	350 MCM	1" O.D.
ACSR	Up to 4/0	336 MCM	Do not cut
Std. Guy Wire	Up to 3/8"	Do not cut	Do not cut
Soft Locks	Up to 3/8"	Do not cut	Do not cut
Soft Steel Bolts	Up to 3/8"	Do not cut	Do not cut

### OPTIONAL ACCESSORIES



The **REC-6NDSL** has a choice of jaw types, including six compression heads, the SLXPJ-JAW, SLXMJ-JAW, SLK-JAW, SLND3-JAW, SLO-JAW, or SLBG-JAW. For cutting, switch to the SLCUT-JAW, SL-CHCUAL, or SL-CHACSR, and for bending, use the SLCB-JAW. Quickly change between head types with the pull-pin design. Operates on same 14.4 volt battery used in all of the battery operated tools. The SL-ND Streamline tool carries a 5 year warranty on the tool, battery and charger.

A rapid advance feature allows quicker compression cycles. An electronic counter allows service technician to see number of compression cycles made by tool.

# BATTERY POWERED COMPRESSION TOOLS

Series 6

## REC-BCN658

6 Ton Compression Tool



### FEATURES

- Open C-Head Design
- Rapid Advance
- One Hand Operation
- Tested Up to 75kV
- Rotational Head
- Bright White, LED Lights for Working in Low Light Conditions
- Ergonomically Designed for Balance and Grip
- Weather Resistant Housing
- Audible Bypass when Predetermined Pressure is Achieved
- 5 Year Warranty on Tool, Battery & Charger

### SPECIFICATIONS

Crimp Force	6 Ton
Weight	10.7 lbs. with Battery
Size	16"L x 10"H x 3.1"W
Jaw Opening	.95"

### CRIMPING ESTIMATES

Material	Cycles
#6 CU/AL	250
1/0 CU/AL	190
4/0 CU/AL	150

### CONNECTOR RANGE

Lugs & Splices	#8-500 MCM CU #8-300 MCM AL
H-Taps	Up to 4/0-4/0

The **REC-CN658** is an open jaw version of the REC-658U latched type tool. The open jaw can easily fit into tight situations where closing of a jaw latch would be a problem.

## SL-B630

6.2 Ton Streamline Dieless Compression Tool



### FEATURES

- Four-Sided Dieless Crimp System
- \*Designed to crimp Anderson Connectors & Other Brand Connectors Manufactured to ANSI C119.4
- Eliminates the Need for Dies
- Tested Up to 75kV
- Rotational Head
- Bright White, LED Lights for Working in Low Light Conditions
- Audible Bypass when Predetermined Pressure is Achieved
- 5 Year Warranty on Tool, Battery & Charger

### SPECIFICATIONS

Crimp Force	6.2 Ton
Weight	10.5 lbs. with Battery
Size	5"L x 21.5"H x 2.7"W
Jaw Opening	.9"

### CRIMPING ESTIMATES

Material	Cycles
4/0 CU/AL	150
500 MCM CR	110

### CONNECTOR RANGE

Lugs & Splices	#6 AWG - 500 MCM CU/AL
----------------	------------------------

The **SL-630** dieless compression tool is used to compress Anderson style lugs. 6.2 tons of compression force is achieved when the tool advances and bypasses at the predetermined pressure. Advance and retract buttons on the tool handle allow for one hand operation, freeing the other hand to maneuver the cable.

\*NOTE: The tool is designed to crimp Anderson Style connectors. Other brand connectors manufactured to ANSI specifications C119.4 can be used. For range-taking connectors, the cable must be maximum size specified for the connector. Consult your connector manufacturer for dieless applications.

# BATTERY POWERED COMPRESSION TOOLS



## SL-B750

6.2 Ton Streamline Dieless Compression Tool



### FEATURES

- Four-Sided Dieless Crimp System
- \*Designed to Crimp Anderson Connectors & other Brand Connectors Manufactured to ANSI C119.4
- Eliminates the Need for Dies
- Rotational Head
- Bright White, LED Lights for Working in Low Light Conditions
- Audible Bypass when Predetermined Pressure is Achieved
- Flip-Top Head Design
- Tested Up to 75kV
- 5 Year Warranty on Tool, Battery & Charger

Flip top latch opens for easy cable positioning and removal. Dieless system for non-tension splices and terminations. One stationary and three movable indenting nibs, which close at 90° angles to each other, so connector is squeezed equally at four strategic points with 6.2 ton of force. Top can be unlatched to accommodate larger size lugs and cables. Typical applications include in-line splicing connectors and lug terminations.

\*NOTE: Designed to crimp Anderson Style connectors. Other brand connectors manufactured to ANSI specifications C119.4 can be used.

### SPECIFICATIONS

Crimp Force	6 Ton
Weight	10.5 lbs. with Battery
Size	5.5"L x 21.5"H x 2.7"W
Jaw Opening	1.5"

### CRIMPING ESTIMATES

Material	Cycles
4/0 CU/AL	150
500 MCM CU	110

### CONNECTOR RANGE

Lugs & Splices	#6 AWG - 750 MCM AL/CU
----------------	------------------------

## REC-B6750

6.2 Ton Dieless Compression Tool



### FEATURES

- Four-Sided Dieless Crimp System
- \*Designed to Crimp Anderson Connectors & Other Brand Connectors Manufactured to ANSI C119.4
- Eliminates the Need for Dies
- One Hand Operation
- Tested Up to 75kV
- Rotational Head
- Rapid Advance
- Ergonomically designed for Balance and Grip
- Weather Resistant Housing
- Audible Bypass when Predetermined Pressure is Achieved
- Flip-Top Head Design
- 5 Year Warranty on Tool, Battery & Charger

Flip-top latch opens for easy cable positioning and removal. The dieless system is used for non-tension splices and terminations. There is one stationary and three movable indenting nibs which close at 90° angles to each other so connector is squeezed equally at four strategic points with 6 tons of force. Typical applications include in-line splicing connectors and lug terminations.

\*NOTE: Designed to crimp Anderson Style connectors. Other brand connectors manufactured to ANSI specifications C119.4 can be used. For range-taking connectors, the cable must be maximum size specified for the connector.

### SPECIFICATIONS

Crimp Force	6.2Ton
Weight	11.7 lbs. with Battery
Size	16.5"L x 10.8"H x 3.1"W
Jaw Opening	1.5"

### CRIMPING ESTIMATES

Material	Cycles
4/0 CU/AL	10
500 MCM CU	110

### CONNECTOR RANGE

Lugs & Splices	#6 AWG - 750 MCM AL/CU
----------------	------------------------

# BATTERY POWERED COMPRESSION TOOLS

Series 6

## REC-B6630

6.2 Ton Dieless Compression Tool



### FEATURES

- \*Designed to Crimp Anderson Connectors & Other Brand Connectors Manufactured to ANSI C119.4
- Rapid Advance
- One Hand Operation
- Tested Up to 75kV
- Rotational Head
- Ergonomically Designed for Balance and Grip
- Weather Resistant Housing
- Audible Bypass when Predetermined Pressure is Achieved
- Eliminates the Need for Dies
- 5 Year Warranty on Tool, Battery & Charger

### SPECIFICATIONS

Crimp Force	6.2 Ton
Weight	11.3 lbs. with Battery
Size	16.1"L x 10.7"H x 3.1"W
Jaw Opening	.90"

### CRIMPING ESTIMATES

Material	Cycles
4/0 CU	90
500 MCM CU	110

### CONNECTOR RANGE

Lugs & Splices	#6 AWG - 500 MCM Al/Cu
----------------	------------------------

The **REC-6630** compresses Anderson style lugs. Advance and retract buttons on the tool handle allow for one hand operation, freeing the other hand to maneuver the cable. \*NOTE: The tool is designed to crimp Anderson Style connectors. Other brand connectors manufactured to ANSI specifications C119.4 can be used. For range-taking connectors, the cable must be maximum size specified for the connector. Consult your connector manufacturer for dieless applications. It also has an external bypass cartridge for pressure adjustment & repair uses.

## REC-B6430

12 Ton Compression Tool



### FEATURES

- One Hand Operation
- Tested Up to 75kV
- Rotational Head
- Rapid Advance
- Bright White, LED Lights for Working in Low Light Conditions
- Ergonomically designed for Balance and Grip
- Weather Resistant Housing
- Audible Bypass when Predetermined Pressure is Achieved
- Protective Rubber Boot on "C" Head For Brush Contact
- 5 Year Warranty on Tool, Battery & Charger

### SPECIFICATIONS

Crimp Force	12 Ton
Weight	11.1 lbs. with Battery
Size	16.9"L x 11.1"H x 3.3"W
Jaw Opening	1.2"

### CRIMPING ESTIMATES

Material	Cycles
500 MCM CU	60
750 MCM CU	45

### CONNECTOR RANGE

Lugs	750 MCM CU/Al
Splices	600 MCM CU/AL

The **REC-6430** was specifically designed for use in single-handed operation in overhead applications such as cable trays. This allows one hand to control the work while the other hand is free to operate the tool. It also eliminates the cumbersome hoses and larger, heavier tools traditionally used in overhead work.

The REC-6430 accepts all 12 ton "U" type dies and is capable of 750 MCM copper lugs and 600 MCM copper splices.



# BATTERY POWERED COMPRESSION TOOLS

## REC-B6510

12 Ton Compression Tool



### FEATURES

- One Hand Operation
- Tested Up to 75kV
- Rotational Head
- Bright White, LED Lights for Working in Low Light Conditions
- Rapid Advance
- Ergonomically Designed for Balance and Grip
- Weather Resistant Housing
- Audible Bypass when Predetermined Pressure is Achieved
- Protective Rubber Boot on "C" Head For Brush Contact
- 5 Year Warranty on Tool, Battery & Charger

### SPECIFICATIONS

Crimp Force	12 Ton
Weight	15.5 lbs. with Battery
Size	17.8"L x 11.1"H x 3.3"W
Jaw Opening	1.65"

### CRIMPING ESTIMATES

Material	Cycles
4/0 CU	90
500 MCM CU	60

### CONNECTOR RANGE

Lugs & Splices	Up to 750 MCM CU/AL
----------------	---------------------

The **REC-6510** was specifically designed for use in single-handed operation in overhead applications such as cable trays. One hand controls the work while the other hand is free to operate tool. Eliminates cumbersome hoses and larger, heavier tools traditionally used in overhead work. The opening is 1.65" which will accept mid-span copper and aluminum splices and lugs up to 750 MCM Cu/Al. Accepts all "U" type dies. Handling is made easier because the REC-6510 system is self-contained and compact. The rapid advance system reduces tool run time, giving you more crimp cycles per battery charge.

## REC-B6510K

12 Ton Compression Tool



### FEATURES

- Utilizes Kearney Type Dies
- One Hand Operation
- Tested Up to 75kV
- Rotational Head
- Bright White, LED Lights for Working in Low Light Conditions
- Rapid Advance
- Ergonomically Designed for Balance and Grip
- Weather Resistant Housing
- Audible Bypass when Predetermined Pressure is Achieved
- Protective Rubber Boot on "C" Head For Brush Contact
- 5 Year Warranty on Tool, Battery & Charger

### SPECIFICATIONS

Crimp Force	12 Ton
Weight	13.5 lbs. with Battery
Size	17.1"L x 11.2"H x 3.1"W

### CRIMPING ESTIMATES

Material	Cycles
500 MCM CU	60
750 MCM CU	45

### CONNECTOR RANGE

Lugs	1033 ACSR
Splices	477 ACSR

The **REC-6510K** battery powered compression tool is designed to accept Kearney WH-2, PH-2 and WH-3 style dies. Weighing just 16.1 pounds it was specifically designed for use in single-handed operation in overhead applications such as cable tray. It also eliminates the cumbersome hoses and larger, heavier tools traditionally used in overhead work. The REC-6510K has a full 12-ton capacity and its 1.5 inch jaw opening accepts lugs up to 1033 MCM. Compression head rotates 350° for use in any position.



# BATTERY POWERED COMPRESSION TOOLS

Series 6

## SL-1000

12 Ton Streamline Dieless Compression Tool



### FEATURES

- Dieless Indent-Style Crimping
- Tested Up to 75kV
- Rotational Head
- Bright White, LED Lights for Working in Low Light Conditions
- Audible Bypass when Predetermined Pressure is Achieved
- Latched Head Design
- Eliminates the Need for Dies
- 5 Year Warranty on Tool, Battery & Charger

### SPECIFICATIONS

Crimp Force	12 Ton
Weight	12.5 lbs. with Battery
Size	21"L
Jaw Opening	1.95"

### CONNECTOR RANGE

Lugs & Splices	#8 AWG - 1000 MCM CU
	#8 AWG - 1000 MCM AL

The **SL-1000** is the first streamline dieless compression tool able to crimp connectors up to 1000 MCM copper and 1000 aluminum. It is the first dieless 12 ton streamline compression tool in the industry featuring a latched head design. The dieless indent style crimping head does not require interchangeable crimping dies. Ergonomically designed for ease of use in underground applications where pistol grip style tools are difficult to use. Release trigger to feather ram for faster crimping cycles. Housing incorporates a rubber inlay on handle to make gripping the tool easier and more comfortable to give the operator better tool control.

## SL-B510

12 Ton Streamline Compression Tool



### FEATURES

- Utilizes "U" Type Dies
- 12 Ton Streamline Tool
- Tested Up to 75kV
- Rotational Head
- Bright White, LED Lights for Working in Low Light Conditions
- Rubber Boot on Compression Head
- Rapid Advance
- Audible Bypass when Predetermined Pressure is Achieved
- 5 Year Warranty on Tool, Battery & Charger

### SPECIFICATIONS

Crimp Force	12 Ton
Weight	12.5 lbs. with Battery
Size	19"L x 4.75"H x 3.9"W
Jaw Opening	1.65"

### CRIMPING ESTIMATES

Material	Cycles
4/0 CU	90
500 MCM CU	60

### CONNECTOR RANGE

Lugs & Splices	Up to 750 MCM CU/A:
----------------	---------------------

The **SL-510** is the first 12 ton streamline compression tool in the industry. The SL-510 will deliver 12 tons of compression force, utilizing all industry standard "U" dies. The capacity of the tool is the same as the pistol grip REC-6510, capable of accepting lugs and splices up to 750 MCM. Utilizing the streamline design and replacing the traditional "C" head with a smaller, lightweight, latched head design makes the SL-510 the lightest 12 ton tool on the market today. The new housing design incorporates a rubber over-mold handle grip area allowing the operator better tool control.

# BATTERY POWERED COMPRESSION TOOLS

## SL-BC510

12 Ton Streamline Compression Tool  
With "C" Head



### FEATURES

- Open C-Head Design
- Utilizes "U" Type Dies
- 12 Ton Streamline Tool
- Tested Up to 75kV
- Rotational Head
- Rubber Boot on Compression Head
- Rapid Advance
- Bright White, LED Lights for Working in Low Light Conditions
- Audible Bypass when Predetermined Pressure is Achieved
- 5 Year Warranty on Tool, Battery & Charger

### SPECIFICATIONS

Crimp Force	12 Ton
Weight	16 lbs. with Battery
Size	19"L x 4.75"H x 3.9"W
Jaw Opening	1.65"

### CRIMPING ESTIMATES

Material	Cycles
4/0 CU	90
500 MCM CU	60

### CONNECTOR RANGE

Lugs & Splices	Up to 750 MCM CU/AL
----------------	---------------------

The **SL-C510** is the first 12 ton streamline compression tool in the industry. The SL-C510 has all the same features as the SL-510 but replaces the latched head design with a "C" head. Housing incorporates a rubber over-mold handle grip area allowing the operator better tool control.

## SL-B510K

12 Ton Streamline Compression Tool  
With "C" Head



### FEATURES

- Utilizes Kearney Type Dies
- 12 Ton Streamline Tool
- One Hand Operation
- Tested Up to 75kV
- Rotational Head
- Bright White, LED Lights for Working in Low Light Conditions
- Rubber Boot on Compression Head
- Rapid Advance
- Audible Bypass when Predetermined Pressure is Achieved
- 5 Year Warranty on Tool, Battery & Charger

### SPECIFICATIONS

Crimp Force	12 Ton
Weight	13.5 lbs. with Battery
Size	19"L x 4.75"H x 3.9"W

### CRIMPING ESTIMATES

Material	Cycles
4/0 CU	90
500 MCM CU	60

### CONNECTOR RANGE

Lugs	Up to 1033 MCM
Splices	Up to 477 ACSR

The **SL-510K** is designed to accept Kearney WH-2, PH-2 and WH-3 style dies. Ideal for use in single-handed operation in overhead applications such as cable tray. It also eliminates the cumbersome hoses and larger, heavier tools traditionally used in overhead work. Compression head rotates 180° for use in any position.

# BATTERY POWERED COMPRESSION TOOLS

Series 6

## SL-B610

15 Ton Streamline Compression Tool



### FEATURES

- Utilizes "P" Type Dies
- Tested Up to 75kV
- Rotational Head
- Bright White, LED Lights for Working in Low Light Conditions
- Rapid Advance
- Audible Bypass when Predetermined Pressure is Achieved
- Protective Rubber Boot on Head
- Flip-Top Rotating Head
- 5 Year Warranty on Tool, Battery & Charger

The **SL-610** utilizes all industry standard "P" dies. The "U" die adapter, PU-15, can be utilized to implement the standard "U" type die. The capacity of the tool is the same as the REC-3610, capable of accepting lugs up to 1500MCM copper and 1250MCM Aluminum.

Streamline design with a smaller, lightweight, latched head. Housing incorporates a rubber over-mold handle grip as well as an optional handle allowing the operator better tool control.

### SPECIFICATIONS

Crimp Force	15 Ton
Weight	16.5 lbs. with Battery
Size	25"L x 4"H x 5"W
Jaw Opening	2"

### CRIMPING ESTIMATES

Material	Cycles
1000MCM CU	40

### CONNECTOR RANGE

Aluminum	#8 AWG - 1250 MCM
Copper	#8 AWG - 1500 MCM
H-Tap	Up to 750/750

### OPTIONAL ACCESSORIES

PU-15"U" DIE ADAPTER

## SL-BC610

15 Ton Streamline Compression Tool



### FEATURES

- Utilizes "P" Type Dies
- Tested Up to 75kV
- Open C Head Design
- Rotational Head
- Rapid Advance
- Bright White, LED Lights for Working in Low Light Conditions
- Audible Bypass when Predetermined Pressure is Achieved
- Protective Rubber Boot on Head
- 5 Year Warranty on Tool, Battery & Charger

The **SL-C610** utilizes all industry standard "P" dies. The "U" die adapter, PU-15, can be utilized to implement the standard "U" type die. The capacity of the tool is the same as the REC-3610, capable of accepting lugs up to 1500MCM copper and 1250MCM Aluminum.

Housing design incorporates a rubber over-mold handle grip as well as an optional handle allowing the operator better tool control.

### SPECIFICATIONS

Crimp Force	15 Ton
Weight	20 lbs. with Battery
Size	23"L x 3.5"H x 4.5"W
Jaw Opening	2"

### CRIMPING ESTIMATES

Material	Cycles
1000MCM CU	50

### CONNECTOR RANGE

Aluminum	#8 AWG - 1250 MCM
Copper	#8 AWG - 1500 MCM
H-Tap	Up to 750/750

### OPTIONAL ACCESSORIES

PU-15"U" DIE ADAPTER

# BATTERY POWERED COMPRESSION TOOLS

## REC-3410

### 12 Ton Streamline Compression Tool



#### FEATURES

- Tested Up to 75kV
- Rotational Head
- Rapid Advance
- Ergonomically Balanced
- Weather Resistant Housing
- Audible Bypass when Predetermined Pressure is Achieved
- Includes DIE-CASE
- Protective Rubber Boot on "C" Head For Brush Contact
- 5 Year Warranty on Tool, Battery & Charger

#### SPECIFICATIONS

Crimp Force	12 Ton
Weight	19 lbs. with Battery
Size	18"L x 10.5"H x 3.5"W
Jaw Opening	1"

#### CRIMPING ESTIMATES

Material	Cycles
4/0 CU	90
500 MCM CU	60

#### CONNECTOR RANGE

Lugs	#8 AWG - 750 MCM CU #10 AWG - 750 MCM AL
Splices	#8 AWG - 400 MCM CU #10 AWG - 400 MCM AL

You get more tool speed and easier handling with the **REC-3410**. It features a rubber boot and is designed to accommodate all 12 ton "U" type dies widely used throughout the electrical industry. It offers a wide handle opening with finger grooves, allowing easier access for gloved work. The base of the tool is contoured for stability and incorporates finger grooves for a better grip.

## REC-3510

### 12 Ton Streamline Compression Tool



#### FEATURES

- UL Classified
- Tested Up to 75kV
- Rotational Head
- Rapid Advance
- Ergonomically Balanced
- Weather Resistant Housing
- Audible Bypass when Predetermined Pressure is Achieved
- Includes DIE-CASE
- Protective Rubber Boot on "C" Head For Brush Contact
- 5 Year Warranty on Tool, Battery & Charger



#### SPECIFICATIONS

Crimp Force	12 Ton
Weight	20 lbs. with Battery
Size	19"L x 10.5"H x 3.5"W
Jaw Opening	1.65"

#### CRIMPING ESTIMATES

Material	Cycles
500 MCM CU	60
750 MCM CU	45

#### CONNECTOR RANGE

Lugs & Splices	#8-750 MCM CU #10-750 MCM AL
----------------	---------------------------------

The REC-3510 is the most versatile tool in our line of battery operated 12 ton compression tools. The jaw opening is 1.65" and will accept mid-span copper and aluminum splices and lugs up to 750 MCM Cu/Al. When the sleeves are compressed they can be removed through the large jaw. This tool accepts all "U" type dies available on the market.

A built-in, preset 10,000 psi bypass cartridge will audibly bypass when optimal pressure is achieved. Test dies accompanied with our PG-510 can confirm the output pressure when needed. The output pressure can be adjusted via a bypass port located at the top of the tool. This tool has the most universal range of all our self-contained ROBO® Tools.

# BATTERY POWERED COMPRESSION TOOLS

Series 6

## REC-3510K

12 Ton Compression Tool



### FEATURES

- Tested Up to 75kV
- Rotational Head
- Rapid Advance
- Ergonomically Balanced
- Weather Resistant Housing
- Audible Bypass when Predetermined Pressure is Achieved
- Includes DIE-CASE
- Protective Rubber Boot on "C" Head For Brush Contact
- 5 Year Warranty on Tool, Battery & Charger

### SPECIFICATIONS

Crimp Force	12 Ton
Weight	20 lbs. with Battery
Size	19"L x 10.5"H x 3.5"W
Jaw Opening	1.5"

### CRIMPING ESTIMATES

Material	Cycles
500 MCM CU	70
750 MCM CU	55

### CONNECTOR RANGE

Lugs	Up to 1033 ACSR
Splices	Up to 477 ACSR

The **REC-3510K** battery powered compression tool is designed to accept Kearney WH-2, PH-2, and WH-3 style dies. It has a full 12 ton capacity and its 1.5" jaw opening accepts lugs up to 1033 MCM. The upgraded REC-3510K is faster and more compact than our previous model. It offers a wider handle opening with finger grooves, allowing easy access for gloved work. The base of the tool is contoured for stability and ease of use.

## REC-3610

15 Ton Compression Tool



### FEATURES

- Tested Up to 75kV
- Rotational Head
- Rapid Advance
- Ergonomically Balanced
- Weather Resistant Housing
- Audible Bypass when Predetermined Pressure is Achieved
- Includes DIE-CASE
- Protective Rubber Boot on Head
- Flip-Top Rotating Head
- External Pressure Adjustment
- 5 Year Warranty on Tool, Battery & Charger

### SPECIFICATIONS

Crimp Force	15 Ton
Weight	24 lbs. with Battery
Size	21.5"L x 10.5"H x 3.5"W
Jaw Opening	2"

### CRIMPING ESTIMATES

Material	Cycles
1000 MCM CU	40

### CONNECTOR RANGE

Aluminum	#8 AWG - 1250 MCM
Copper	#8 AWG - 1500 MCM
H-Tap	Up to 750/750

### OPTIONAL ACCESSORIES

PU-15"U" DIE ADAPTER
----------------------

The **REC-3610** battery powered compression tool utilizes "P" type dies to crimp splices and lugs up to 1250 MCM aluminum and 1500 MCM copper. It offers a wide handle opening with finger grooves, allowing easy access for gloved work. Tool base is contoured for stability and ease of use. Latched head incorporates pull-out release pin that cannot be entirely removed from the jaw. The 2" jaw opening accepts all "P" type dies used in the industry today. The PU-15 die adapter is available for use with all 12 ton "U" type dies.

# SERIES 6 Battery Powered Cutting Tools

---

THE CHOICE OF  
PROFESSIONALS.







---

# BATTERY POWERED CUTTING TOOLS

SERIES 6

## ECO-336

### 6 Ton Steamline Cutting Tool



#### FEATURES

- Lightweight ergonomic design
- One handed operation
- Rotational Head
- Tested up to 75kV
- Compatible with all Huskie 14.4V Batteries
- 1 Year Warranty

#### SPECIFICATIONS

Cutting Force	6 Ton
Weight	6.8 Lbs. With Battery
Size	3.7"L x 19.25"H x 2.8"W

#### CUTTING ESTIMATES

Material	Cycles
336 ACSR	100

#### CUTTING CAPACITIES

ACSR	336 MCM
Aluminum	Up to 1"
Copper	500 MCM
Std. Guy Wire	3/8"

The **ECO-336** streamline battery powered cutting tool has a powerful 6 ton output for handling the most difficult of tasks. The ECO-336 is designed for steel core conductor, but also has the added feature of being able to handle copper and aluminum conductor up to 500 MCM.

## ECO-500

### 6 Ton Steamline Cutting Tool



#### FEATURES

- Lightweight ergonomic design
- One handed operation
- Rotational Head
- Tested up to 75kV
- Compatible with all Huskie 14.4V Batteries
- 1Year Warranty

#### SPECIFICATIONS

Cutting Force	6 Ton
Weight	6.8 Lbs. With Battery
Size	3.7"L x 19.25"H x 2.8"W

#### CUTTING ESTIMATES

Material	Cycles
500 MCM AL	200

#### CUTTING CAPACITIES

ACSR	Do not cut
Aluminum	Up to 1"
Copper	Up to 500 MCM
Std. Guy Wire	Do not cut

The **ECO-500**, which is designed for copper and aluminum conductor only, provides a much cleaner cut when working with non-ACSR conductor.

# BATTERY POWERED CUTTING TOOLS

Series 6

## SL-SB20

6 Ton Steamline Cutting Tool



### FEATURES

- Flip-Top Latching Head
- Tested Up to 75kV
- One Hand Operation
- Rotational Head
- Bright White, LED Lights for Working in Low Light Conditions
- Rapid Advance
- 5 Year Warranty on Tool, Battery & Charger

The **SL-S20** was designed to cut the toughest materials used in construction today. It can replace an entire tool kit, including several sizes of conventional bolt cutters, hacksaws, acetylene torches and cable cutters. With the pull of a trigger, you can cut ACSR cables up to 477, standard guy wires to 3/8", and ground rods to 1/2". The specially designed flip-top latch and rotating head provide exceptional ease of use and maneuverability in tight working quarters.

### SPECIFICATIONS

Cutting Force	6 Ton
Weight	7.7 Lbs. With Battery
Size	3.7"L x 18.5"H x 2.8"W

### CUTTING ESTIMATES

Material	Cycles
336 ACSR	90
1/2" Wire Rope	90
1/2" Rebar	60
1/2" Ground Rod	60
3/8" Guy Wire	45

### CUTTING CAPACITIES

Wire Rope	5/8"
Rebar (SC 40)	1/2"
Rebar (SC 50)	3/8"
Ground Rod	1/2"
ACSR	477 MCM
Guy Wire	3/8"

## ECO-R13

6 Ton Steamline Cutting Tool



### FEATURES

- Open "C" Style Head
- One Hand Operation
- Rotational Head
- Inline style for access to hard to reach areas
- Overload Bypass Protection
- 1 Year Warranty

The ECO-R13 is designed to cut the toughest materials used in construction. This tool can replace an entire tool kit, including several sizes of conventional bolt cutters, hacksaw, acetylene torches and cable cutters. The ECO-R13 is designed as an in-line type cutter with an open "C" jaw that can cut up to 1/2" rebar. It comes with a Lithium-Ion battery and rapid charger. The cutting blades on both cutting surfaces can be rotated when dull and replaced as necessary.

### SPECIFICATIONS

Cutting Force	6 Ton
Weight	7.1 Lbs. With Battery
Size	3.7"L x 16.25"H x 2.8"W
Jaw Opening	1/2"

### CUTTING CAPACITIES

Rebar (SC 50)	1/2", #4 (Grade 60)
Ground Rod	1/2"
Steel Bolt	1/2", Mild Steel

## REC-B630Y

### 6.6 Ton Scissor-Type Cutting Tool



#### FEATURES

- Open Scissor Jaw for Easy Cable Insertion
- Tested Up to 75kV
- One Hand Operation
- Rotational Head
- Bright White, LED Lights for Working in Low Light Conditions
- Rapid Advance
- Ergonomically Designed For Balance & Grip
- Weather Resistant Housing
- Overload Bypass Protection
- 5 Year Warranty on Tool, Battery & Charger

#### SPECIFICATIONS

Cutting Force	6.6 Ton
Weight	10.3 Lbs. With Battery
Size	15.5" L x 12.5" H x 3.1" W
Jaw Opening	1.2"

#### CUTTING ESTIMATES

Material	Cycles
500 MCM CU	110

#### CUTTING CAPACITIES

*ACSR	336 MCM
Copper	500 MCM
Aluminum	1.18" O.D.
Std. Guy Wire	3/8"
Bar	Do not cut

The **REC-630Y** features a hydraulic system with rapid advance for reduced cycle times. All cuts are clean with a minimal amount of cable distortion, which allows for easy connector installation on cables. The open "scissor" type jaw is convenient for operator when reaching out to cut cable opposed to latching the cutter jaw around the cable. The head can be rotated 180° for greater maneuverability. The keeper plate on the REC-630Y prevents jaws from spreading apart when cutting ACSR.

\*NOTE: Not recommended for cutting 4/0 Penguin or 3/0 Pigeon ACSR Cables.

## REC-B634YC

### 6.6 Ton Scissor-Type Cutting Tool



#### FEATURES

- Open Scissor Jaw for Easy Cable Insertion
- Tested Up to 75kV
- One Hand Operation
- Rotational Head
- Bright White, LED Lights for Working in Low Light Conditions
- Rapid Advance
- Ergonomically Designed For Balance & Grip
- Weather Resistant Housing
- Overload Bypass Protection
- 5 Year Warranty on Tool, Battery & Charger

#### SPECIFICATIONS

Cutting Force	6.6 Ton
Weight	9.9 Lbs. With Battery
Size	15.5" L x 12.5" H x 3.1" W
Jaw Opening	1.4"

#### CUTTING ESTIMATES

Material	Cycles
500 MCM CU	130
750 MCM CU	90

#### CUTTING CAPACITIES

Aluminum	1.4" O.D.
Copper	800 MCM
ACSR	Do no cut

Large copper cable cutting is easy with the **REC-634YC**. The hydraulic system features a rapid advance for reduced cycle times. Larger jaw opening than REC-630Y without a "keeper" guard. Its sharp blades are rated for copper and aluminum cables only, up to 800 MCM Cu or 1.4" Al outside diameter.

Scissor jaw is convenient when reaching out to cut cable, as opposed to latching cutting jaw around cable. Distortion of cable is minimal and cables can still be sleeved easily. Once cable is severed, cutter blades can be opened with release trigger. **NOTE: DO NOT CUT STEEL.**

# BATTERY POWERED CUTTING TOOLS

Series 6

## REC-B660YC

6.6 Ton Scissor-Type Cutting Tool



### FEATURES

- Designed to Cut Large Jacketed Underground Cable
- Open Scissor Jaw for Easy Cable Insertion
- Tested Up to 75kV
- One Hand Operation
- Rotational Head
- Bright White, LED Lights for Working in Low Light Conditions
- Rapid Advance
- Ergonomically Designed For Balance & Grip
- Weather Resistant Housing
- Overload Bypass Protection
- 5 Year Warranty on Tool, Battery & Charger

### SPECIFICATIONS

Cutting Force	6.6 Ton
Weight	10.2 Lbs. With Battery
Size	16.6"L x 12.75"H x 3.1"W
Jaw Opening	2.5"

### CUTTING ESTIMATES

Material	Cycles
400 MCM AL	130
500 MCM CU	110

### CUTTING CAPACITIES

Copper	*500 MCM
Aluminum	2" O.D.
ACSR	Do not cut

The **REC-660YC** was specifically made for underground aluminum cable cutting applications. Extra wide jaws make cutting larger diameter underground cables easier. Features a hydraulic two-stage rapid advance system to reduce cycle time.

Due to larger cutting surface of blades, maximum size copper cable that can be cut is 500 MCM.

The large jaws can be placed over cables flat on the ground and cables will be scooped up as cutting jaws are closed. All cuts are clean so there is minimal cable distortion for cable sleeving purposes.

\*NOTE: DO NOT CUT STEEL. Will not cut all 500 MCM Copper. Consult factory for applications.

## REC-SB620

6.6 Ton Cutting Tool



### FEATURES

- Flip-Top Latching Head
- Tested Up to 75kV
- One Hand Operation
- Rotational Head
- Bright White, LED Lights for Working in Low Light Conditions
- Rapid Advance
- Ergonomically Designed For Balance & Grip
- Weather Resistant Housing
- Overload Bypass Protection
- 5 Year Warranty on Tool, Battery & Charger

### SPECIFICATIONS

Cutting Force	6.6 Ton
Weight	8.7 Lbs. With Battery
Size	13.3"L x 10"H x 3.1"W
Jaw Opening	.75"

### CUTTING ESTIMATES

Material	Cycles
336 ACSR	90
1/2" Wire Rope	90
1/2" Rebar	60
1/2" Ground Rod	60
3/8" Guy Wire	40

### CUTTING CAPACITIES

Wire Rope	5/8"
Rebar (SC 40)	1/2"
Rebar (SC 60)	3/8"
Ground Rod	1/2"
ACSR	477 MCM
Std. Guy Wire	3/8"

The **REC-S620** can replace an entire tool kit, including conventional bolt cutters, hacksaws, acetylene torches and cable cutters. It features a hydraulic two-stage rapid advance system to reduce cycle time. Flip-top latch and rotating head provide exceptional maneuverability. The REC-S620 has an overload bypass when the tool reaches 6.6 tons.

NOTE: DO NOT CUT EHS HOOKS OR CASE HARDENED STEEL RODS. SEE REC-S624CC, S-24CC, SP-24CC, S-32CC OR SP-32CC1.

## SL-SB40

### 8 Ton Streamline Cutting Tool



The SL-SB40 features one of the most dynamic cutting heads on the streamline platform. This cutter is made for one-handed operation. Remove pin latch, place over cable, reinsert pin and cut.

NOTE: DO NOT CUT EHS GUY WIRE OR CASE HARDENED STEEL RODS. SEE REC-S624CC, S-24CC, SP-24CC, S-32CC OR SP-32CC1.

#### FEATURES

- Robust streamline platform
- Tested Up To 75KV
- One Hand Operation
- Rotational Head
- Bright White, LED Lights for Working in Low Light Conditions
- Rapid Advance
- Overload Bypass Protection
- 5 Year Warranty on Tool, Battery & Charger

#### SPECIFICATIONS

Cutting Force	8 Ton
Weight	24 Lbs. With Battery
Size	21"L x 4.75"H x 3.9"W
Jaw Opening	1.6"

#### CUTTING ESTIMATES

Material	Cycles
795 ACSR	60
3/4" Wire Rope	90
5/8" Rebar	60
5/8" Ground Rod	60
3/8" Guy Wire	40

#### CUTTING CAPACITIES

Wire Rope	3/4"
Rebar (SC 40)	5/8"
Rebar (SC 60)	5/8"
Ground Rod	5/8"
ACSR	1590 MCM
Std. Guy Wire	5/8"
CU/AL Cable	1.5"

## REC-SB640

### 8 Ton Cutting Tool



The REC-S640 is ideal for aerial bucket work and trench operations. It features a two-stage, rapid advance ram for reduced cycle times. This cutter is made for one-handed operation - remove pin latch, place over cable, reinsert pin and cut.

NOTE: DO NOT CUT EHS GUY WIRE OR CASE HARDENED STEEL RODS. SEE REC-S624CC, S-24CC, SP-24CC, S-32CC OR SP-32CC1.

#### FEATURES

- Tested Up to 75kV
- One Hand Operation
- Rotational Head
- Bright White, LED Lights for Working in Low Light Conditions
- Rapid Advance
- Ergonomically Designed for Balance and Grip
- Weather Resistant Housing
- Overload Bypass Protection
- 5 Year Warranty on Tool, Battery & Charger

#### SPECIFICATIONS

Cutting Force	8 Ton
Weight	13.2 Lbs. With Battery
Size	18.1"L x 11.4"H x 3.1"W
Jaw Opening	1.6"

#### CUTTING ESTIMATES

Material	Cycles
795 ACSR	60
3/4" Wire Rope	90
5/8" Rebar	60
5/8" Ground Rod	60
3/8" Guy Wire	40

#### CUTTING CAPACITIES

Wire Rope	3/4"
Rebar (SC 40)	5/8"
Rebar (SC 60)	5/8"
Ground Rod	5/8"
ACSR	1590 MCM
Std. Guy Wire	5/8"
CU/AL Cable	1.5"



# BATTERY POWERED CUTTING TOOLS

Series 6

## REC-SB624H

8 Ton Cutting Tool



### FEATURES

- Shear Style Cut Design
- Flip-Top Latching Head
- Tested Up to 75kV
- One Hand Operation
- Rotational Head
- Bright White, LED Lights for Working in Low Light Conditions
- Rapid Advance
- Ergonomically Designed For Balance & Grip
- Weather Resistant Housing
- Overload Bypass Protection
- 5 Year Warranty on Tool, Battery & Charger

The **REC-S624H** can replace an entire tool kit, including conventional bolt cutters, hacksaws, acetylene torches and cable cutters. Features a hydraulic two-stage rapid advance system for reduced cycle times. Flip-top latch and rotating head provide exceptional maneuverability in tight working quarters. The REC-S624H has an overload bypass, when tool reaches 8 tons.

NOTE: DO NOT CUT CASE HARDENED STEEL RODS. SEE REC-S624CC, S-24CC, SP-24CC, S-32CC OR SP-32CC1.

### SPECIFICATIONS

Cutting Force	8 Ton
Weight	10.8 Lbs. With Battery
Size	13.7"L x 10.2"H x 3.1"W
Jaw Opening	.95"

### CUTTING ESTIMATES

Material	Cycles
336 ACSR	90
1/2" Wire Rope	90
1/2" Rebar	60
1/2" Ground Rod	60
Guy Wire	40

### CUTTING CAPACITIES

Wire Rope	7/8"
Rebar (SC 40)	5/8"
Rebar (SC 60)	1/2"
Ground Rod	5/8"
ACSR	477 MCM
Guy Wire	5/8"
Guy Wire (EHS)	7/16"

## REC-SB624CC

8 Ton Cutting Tool



### FEATURES

- Anvil Style Cut Design
- Flip-Top Latching Head
- Tested Up to 75kV
- One Hand Operation
- Rotational Head
- Rapid Advance
- Ergonomically Designed For Balance & Grip
- Weather Resistant Housing
- Overload Bypass Protection
- 5 Year Warranty on Tool, Battery & Charger

The **REC-S624CC** cuts the toughest solid materials, utilizing the anvil style cut design. It can replace an entire tool kit, including conventional bolt cutters, hacksaw, acetylene torches and cable cutters. Features a hydraulic two-stage rapid advance system for reduced cycle times. Flip-top latch and rotating head provide exceptional maneuverability in tight working quarters. The REC-S624CC has an overload bypass, when tool reaches 8 tons.

### SPECIFICATIONS

Cutting Force	8 Ton
Weight	10.8 Lbs. With Battery
Size	13.7"L x 10.2"H x 3.1"W
Jaw Opening	.95"

### CUTTING ESTIMATES

Material	Cycles
477 ACSR	90
1/2" Rebar	60
1/2" Ground Rod	60
3/8" Guy Wire	40

### CUTTING CAPACITIES

ACSR	477 MCM
Std. Guy Wire	5/8"
EHS Guy Wire	9/16"
Ground Rod	5/8"
Rebar (SC 40)	5/8"

## REC-B105YC

### 9 Ton Scissor-Type Cutting Tool



#### FEATURES

- Open Scissor Jaw for Easy Cable Insertion
- Rotational Head
- Bright White, LED Lights for Working in Low Light Conditions
- Rapid Advance
- Ergonomically Balanced
- Weather Resistant Housing
- Overload Bypass Protection
- Sidebar Handle for Stability and Balance
- 5 Year Warranty on Tool, Battery & Charger

#### SPECIFICATIONS

Cutting Force	9 Ton
Weight	14.7 Lbs. With Battery
Size	20.8"L x 13.3"H x 3.4"W
Jaw Opening	3.3"

#### CUTTING ESTIMATES

Material	Cycles
1000 MCM AL	60
1000 MCM CU	90

#### CUTTING CAPACITIES

Aluminum	3.3"
Telecommunication	3.3"
Lead Sheath	2.5"
Copper	1000 MCM
ACSR	Do not cut

The REC-685YC has extremely large jaws and scissor-type blades for easy cutting of large underground cables. Sidebar handle to stabilize and balance tool. Built-in bypass cartridge to avoid cutter damage for cables beyond the cutter's capacity. Open jaw design to scoop up cables against a wall, in hard to reach areas and on the ground.

NOTE: DO NOT CUT STEEL.

## SL-B95YC

### 9 Ton Streamline Cutting Tool



#### FEATURES

- Open Scissor Jaw for Easy Cable Insertion
- Rotational Head
- Bright White, LED Lights for Working in Low Light Conditions
- Rapid Advance
- Overload Bypass Protection
- Sidebar Handle for Stability and Balance
- 5 Year Warranty on Tool, Battery & Charger

#### SPECIFICATIONS

Cutting Force	9 Ton
Jaw Opening	3.7"

#### CUTTING ESTIMATES

Material	Cycles
1000 MCM AL	60
1000 MCM CU	90

#### CUTTING CAPACITIES

Aluminum	3.7"
Telecommunication	3.7"
Lead Sheath	2.5"
ACSR	Do not cut

The SL-95YC is designed to cut copper and aluminum cables as well as lead-sheathed telecommunication cables. The extremely large jaws and scissor-type blades allow for easy cutting of large underground cables. The sidebar handle allows the user to stabilize and balance the tool. This tool also has a built-in bypass cartridge to avoid cutter damage for those cables that are beyond the cutter's capacity. The open jaw design allows the user to scoop up cables that are against a wall, in hard to reach areas and/or the ground.

NOTE: DO NOT CUT STEEL.

# BATTERY POWERED CUTTING TOOLS

Series 6

## REC-S3550

13 Ton Cutting Tool



### FEATURES

- Flip-Top Latching Head
- Tested Up to 75kV
- One Hand Operation
- Rotational Head
- Rapid Advance
- Ergonomically Designed for Balance & Grip
- Weather Resistant Housing
- Overload Bypass Protection
- 5 Year Warranty on Tool, Battery & Charger

### SPECIFICATIONS

Cutting Force	13 Ton
Weight	23 Lbs. With Battery
Size	21.5"L x 10.5"H x 3.5"W
Jaw Opening	2"

### CUTTING ESTIMATES

Material	Cycles
Wire Rope	60
Rebar, Anchor, Ground	45
CU & AL Wire	35
ACSR	45
Std. Guy Wire	30

The REC-S3550 cuts ACSR, guy wire, wire rope, and ground rod. Powerful and portable with a 2" jaw opening. A latch-type jaw swings open to accept material to be cut. The head can be rotated for proper positioning of rod or cable. This is our most versatile cutter patterned after our S-55B hand operated cutter.

NOTE: WILL CUT ALL 795 ACSR CABLE, INCLUDING DRAKE.

### CUTTING CAPACITIES

Soft Bolts	1-1/4"
Rebar, Anchor, Ground	3/4"
CU & AL Wire	2"
ACSR	2"
Std. Guy Wire	3/4"
Wire Rope	1"

## REC-Y60ACM

Gear-Driven Cable Cutter



### FEATURES

- Ergonomic Handle
- 2.3" Jaw Opening
- One Hand Operation
- Safety Lockout Switch
- Upgraded Motor and Gear System
- 5 Year Warranty on Tool, Battery & Charger

### SPECIFICATIONS

Cutting Force	10 Ton
Size	4"W x 15"H x 8"L
Jaw Opening	2.3"

### CUTTING ESTIMATES

Material	Cycles
1000 MCM CU	25
1500 MCM AL	30

### CUTTING CAPACITIES

Aluminum	1500 MCM
Copper	1000 MCM
ACSR	Do not cut

The REC-Y60ACM has the largest and most robust open scissor blades on Huskie's gear-driven platform. Comfortably fits into gloved hand and repetitive ratcheting movement is eliminated. Handle is rotated 90° to blade for a more ergonomic and comfortable cutting position, reducing the risk of sprains, strains and lost time due to muscle related injuries. Movable blade has wide gear teeth for extra power and full cutting traction. Gear guides are attached on both ends of movable blade to align gear teeth with internal pinion gear. Consult factory for 1000 MCM copper and above.

NOTE: Do Not Cut Steel

## REC-50M

### Gear-Driven Cable Cutter



#### FEATURES

- Tested Up to 75kV
- One Hand Operation
- Ergonomically Balanced
- Weather Resistant Housing
- Overload Circuit Breaker Protection
- For Copper and Aluminum Only
- 5 Year Warranty on Tool, Battery & Charger

#### SPECIFICATIONS

Weight	6 Lbs. With Battery
Size	14.5"L x 4"H x 4.5"W
Jaw Opening	2"

#### CUTTING ESTIMATES

Material	Cycles
1000 MCM CU	40
1000 MCM AL	50

#### CUTTING CAPACITIES

Aluminum	1500 MCM
Copper	1000 MCM

The REC-50M battery operated slicing tool cuts 2" cable with the touch of a finger. A powerful gear reduction motor pulls a movable blade through the toughest copper and aluminum cables. The REC-50M comfortably fits into a gloved hand and repetitive ratcheting movement is entirely eliminated. A squeeze of the rocker arm trigger is all it takes to make a cut and almost no muscle power is needed, reducing the risk of sprains, strains and lost time due to muscle related injuries. The movable blade has wide gear teeth for extra power and full cutting traction. Gear guides are attached on both ends of movable blade to align gear teeth with internal pinion gear.

## REC-54ACM

### Gear-Driven Cable Cutter



#### FEATURES

- Ergonomic Handle
- 2-1/8" Jaw Opening
- Cuts up to 1500 MCM Al
- One Hand Operation
- Safety Lockout Switch
- Upgraded Motor and Gear System
- 5 Year Warranty on Tool, Battery & Charger

#### SPECIFICATIONS

Weight	7.2 Lbs. With Battery
Size	16"L x 4"H x 4.5"W
Jaw Opening	2-1/8"

#### CUTTING ESTIMATES

Material	Cycles
1000 MCM CU	25
1000 MCM AL	30

#### CUTTING CAPACITIES

Aluminum	1500 MCM
Copper	1000 MCM

The REC-54ACM fits into a gloved hand and repetitive ratcheting movement is entirely eliminated. A squeeze of the rocker arm trigger is all it takes to make a cut and almost no muscle power is needed, reducing the risk of sprains, strains and lost time due to muscle related injuries. The movable blade has wide gear teeth for extra power and full cutting traction. Gear guides are attached on both ends of movable blade to align gear teeth with internal pinion gear.

Designed to cut stranded copper and aluminum cables. Operation is the same as REC-54M, but it has sharper blades for cutting only non-ferrous materials. DO NOT cut steel with this model or blade damage will occur.

REC-54M

Gear-Driven Cable Cutter



FEATURES

- Improved Ergonomic Handle
- 2-1/8" Jaw Opening
- Cuts up to 1590 ACSR
- One Hand Operation
- Safety Lockout Switch
- Upgraded Motor and Gear System
- 5 Year Warranty on Tool, Battery & Charger

SPECIFICATIONS

Weight	8 Lbs. With Battery
Size	15.5"L x 4.5"H x 5"W
Jaw Opening	2-1/8"

CUTTING ESTIMATES

Material	Cycles
1590 MCM ACSR	35

CUTTING CAPACITIES

Aluminum	1500 MCM
Copper	750 MCM
ACSR	1590 MCM

The REC-54M is a heavy duty cable cutter primarily used to cut ACSR. Both cutting blades are notched to avoid denting of cutting surfaces when steel strand is encountered. Handle is rotated 90° to blade to achieve a more ergonomic and comfortable cutting position. This tool incorporates a blade retainer, which keeps the blades from spreading apart while cutting steel cables. The REC-54M was designed for single and multi-stranded steel cores and aluminum cables. The powerful motor & gear drive allow the operator to cut through the toughest cables with just the pull of the trigger.

NOTE: The REC-54M is not intended to cut guy wires, ground rod or bolts. FOR CLEAN CUTS ON COPPER & ALL ALUMINUM CABLE PLEASE REFER TO the REC-50M & THE REC-54ACM.

REC-Y33M

Gear-Driven Cable Cutter



FEATURES

- Improved Ergonomic Handle
- 1.25" Jaw Opening
- One Hand Operation
- Safety Lockout Switch
- Upgraded Motor and Gear System
- 5 Year Warranty on Tool, Battery & Charger

Weight	7.2 Lbs. With Battery
Size	16"L x 4"H x 4.5"W
Jaw Opening	1.25"

CUTTING ESTIMATES

Material	Cycles
500 MCM CU	25
1.25" MCM AL	30

CUTTING CAPACITIES

Aluminum	1.25"
Copper	500 MCM
ACSR	Up to 636 MCM

The REC-Y33M cable cutter has an open jaw making it easy to insert cables for one handed operation. The jaw, which incorporates a blade retainer, keeps blade from spreading apart when cutting cable with a steel core. It features a lock-out switch for reversing blade direction.

NOTE: The REC-Y33M will not cut guy wire, ground rod anchor rod or bolts.



---

# BATTERIES, CHARGERS & ACCESSORIES

---



# BATTERIES, CHARGERS & ACCESSORIES



## BP-185

Lithium-Ion Battery

SPECIFICATIONS	
Voltage	18 V
Battery Capacity	5.0 Ah
Weight	1.5 lbs. (0.68 kg)
Size	4.9"L x 2.25"H x 2.75"W 124mm x 57mm x 70mm



## CH-185

BP-185 Battery Charger

### FEATURES

- 120V AC power cord
- Designed for Huskie 18V 5.0 Ah lithium ion BP-185 battery
- UL/CUL agency approvals
- Monitors battery temperature and battery voltage for correct charging
- 80 min. charge time

SPECIFICATIONS	
Voltage	120V AC
Weight	2 lbs. (0.91 kg)
Size	6.6"L x 2.9"H x 6.25"W 168mm x 74mm x 159mm
Battery Capacity	5.0 Ah
Full Charging Time	80 min.



## CH-285

Dual Battery Charger

### FEATURES

- 120V AC power cord
- Designed for Huskie 18V 5.0 Ah lithium ion BP-185, BP-80, BP-82 & BP-84 Batteries
- UL/CUL agency approvals
- Charges one battery, then the other if both are inserted at the same time
- LED indicator lights states the charging status

SPECIFICATIONS	
Voltage	18 V
Battery Capacity	5.0 Ah
Weight	1.5 lbs. (0.68 kg)
Size	4.9"L x 2.25"H x 2.75"W 124mm x 57mm x 70mm



## BP-82

Lithium-Ion Battery

### FEATURES

- High capacity 2.0Ah battery pack
- Lightest of huskie's battery pack at .70 lbs.
- The performance is minimally affected by extreme temperatures
- Non-hazardous chemistry and environmentally safe
- Recyclable with the RBRC recycling program



## BP-84

Lithium-Ion Battery

### FEATURES

- High capacity 4.0Ah battery pack
- 50% Longer run time as compared to NiCad
- The performance is minimally affected by extreme temperatures
- Minimal self-discharge
- Non-hazardous chemistry and environmentally safe
- Recyclable with the RBRC recycling program



## CH-94

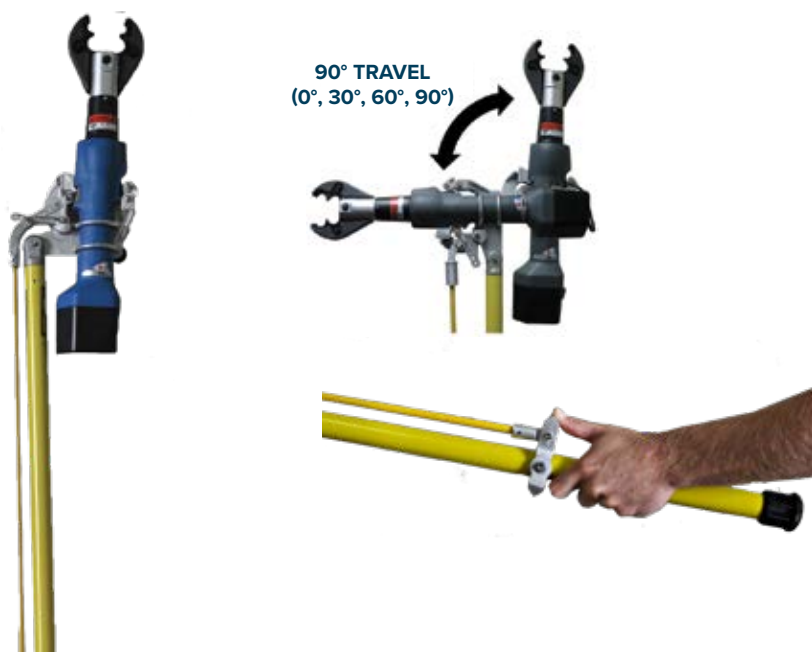
Lithium-Ion Charger

### FEATURES

- 120V AC power cord
- Designed for Huskie lithium ion batteries only
- Redesigned contact terminals for a stronger Engagement w/the battery
- UL/CUL agency approvals
- Monitors battery temperature and battery voltage for correct charging
- 1 Hour charge time

## 1256-H & 1258-H

Hot Stick for ECO-EZ Huskie Tools



### FEATURES

- Battery tool installs quickly and easily on stick
- 6' And 8' lengths
- For overhead and underground use
- Tool adjusts to multiple positions with universal head 0, 30, and 90 degrees.
- Push lever to activate tool and pull to release
- For use on voltages up to 69kV
- Fiberglass stick tested up to 100kV per foot
- Huskie tools not included

### CRIMPING ESTIMATES

1256-H	6' Hot Stick
1258-H	8' Hot Stick

## ECO-EZHBAG

Huskie Tools Bag



Carry tools and accessories with the **ECO-EZHBAG**. The bag is made of weather resistant vinyl and has two Velcro® closures. Large pockets on the outside hold extra accessories. The bag measures 24" in height and 11.5" wide.

### SPECIFICATIONS

Size	24"H x 11.5"W
------	---------------

## EZ-HLSTR/SL-HLSTR

Huskie Tools Holster



Order your own Huskie Holster, the **EZ-HLSTR/SL-HLSTR**, to carry your ECO-EZ, SL tool or any manual hydraulic tool! The Huskie Tools Holster keeps your inline tool close to your side, and Velcro® allows you to quickly grab the tool from the pouch. The holster is manufactured by Buckingham.

### FEATURES

- Two grommets allow the holster to hang in a bucket
- Very durable
- Velcro® sides for quick tool access
- Side pocket and carabiner for extras

### SPECIFICATIONS

Size	23.5"H x 7"W
------	--------------



---

# MANUAL COMPRESSION TOOLS

---



## CN-258

6 Ton Compression Tool  
w/Rubber Boot

### FEATURES

- Two-stage rapid advance
- External pressure adjustment

Huskie's **CN-258** is used for service entrance connections up to 4/0, and its bypass cartridge assures all compressions. A two-stage, rapid advance pumping system saves compression strokes and time. The nest dies are D-3, and can be changed with other Kearney "O" type dies. If you wish to use Burndy "W" type dies, simply slip the "W" type over the D-3 nest die and snap them into the locked position. Huskie Tools carries a wide range of market equivalent dies. Pressure can be checked with Huskie's PG-15 pressure gauge. The tool comes complete with a carrying case.

### SPECIFICATIONS

Crimp Force	6 Ton
Weight	8.5 lbs.
Size	21"L
Jaw Opening	.95"

### CONNECTOR RANGE

Lugs	#6-500 MCM Cu
Splices	#6-300 MCM Al
H-Tap	4/0-4/0



## EP-630A

6.2 Ton Dieless  
Compression Tool

### FEATURES

- \*Designed to crimp Anderson connectors & other brand connectors manufactured to ANSI C119.4
- Two-stage rapid advance
- External pressure adjustment

The **EP-630A** is commonly used by electric utilities and contractors who prefer dieless compression to circumferential compression. The operator simply positions a connector in the jaws and pumps until the tool bypasses at 6.2 tons of output. Three moveable nibs crimp the connector against a fourth stationary nib. A carrying case is included.

\*The EP-630A was designed to crimp Anderson style connectors, and other brand connectors manufactured to ANSI C119.4.

### SPECIFICATIONS

Crimp Force	6.2 Ton
Weight	11.5 lbs.
Size	22"L
Jaw Opening	.9"
Center Opening	1.25"

### CONNECTOR RANGE

Lugs & Splices	#6 AWG-500 MCM Cu/Al
----------------	----------------------



## EP-750A

6.2 Ton Flip-Top Dieless  
Compression Tool

### FEATURES

- \*Designed to crimp Anderson connectors & other brand connectors manufactured to ANSI C119.4
- Rapid advance
- Flip-top head design
- Eliminates the need for dies

The **EP-750A** operates the same as the EP-630A, but has a larger connector/cable capacity. Larger cables can be inserted and easily removed by opening the flip-top head. A carrying case is included.

\*The EP-750A was designed to crimp Anderson style connectors, and other brand connectors manufactured to ANSI C119.4.

### SPECIFICATIONS

Crimp Force	6.2 Ton
Weight	11.5 lbs.
Size	23"L
Jaw Opening	1.5"

### CONNECTOR RANGE

*Lugs & Splices	#6 AWG-750 MCM Al/Cu
-----------------	----------------------

# MANUAL COMPRESSION TOOLS



## EP-410

12 Ton Compression Tool  
w/Rubber Boot

### FEATURES

- Protective rubber boot on “C” head
- External pressure adjustment

The **EP-410**, hand operated, compression tool features a two stage rapid advance pumping system. It accepts all U-type dies currently manufactured for 12 ton tools on the market. Consult your connector manufacturer for exact cable, connector, and die combinations. Huskie stocks a variety of dies, simply specify the manufacturer's die and connector numbers when contacting your dealers.

SPECIFICATIONS	
Crimp Force	12 Ton
Weight	11.5 lbs.
Size	23”L
Jaw Opening	1”

CONNECTOR RANGE	
Lugs	Up to 750 MCM Cu
Splices	Up to 400 MCM Cu



## EP-430

12 Ton Compression Tool  
w/Rubber Boot

### FEATURES

- Protective rubber boot on “C” head
- External pressure adjustment

The **EP-430** is unique in that it has a large jaw opening of 1-3/16” and is able to splice up to 600 MCM. This tool was designed for the electrical contractor or electric utility lineman who is confronted with larger cable diameters and larger connectors. Similar competitive tools are limited to a .95” jaw opening that drastically reduces their connecting range. Most internal hydraulic components are the same as the EP-410 and EP-510.

SPECIFICATIONS	
Crimp Force	12 Ton
Weight	13.5 lbs.
Size	24”L
Jaw Opening	1-3/16”

CONNECTOR RANGE	
Lugs	Up to 750 MCM Cu
Splices	Up to 600 MCM Cu



## EP-510K

12 Ton Compression Tool  
w/Rubber Boot

### FEATURES

- Protective rubber boot on “C” head
- External pressure adjustment

The Huskie **EP-510K** was designed to accept Kearney dies commonly used in their models WH-2, PH-2, and WH-3 hydraulic tools. It features our exclusive replaceable bypass cartridge to facilitate shop repairs and eliminate costly down time. A carrying case is included. Tool output tonnage can be determined by using our model PG-510 pressure gauge with model TDK-1.

### SPECIFICATIONS

Crimp Force	12 Ton
Weight	17 lbs.
Size	26”L
Jaw Opening	1.5”

### CONNECTOR RANGE

Lugs	Up to 1033 MCM Stranded
Splices	477 ACSR

### OPTIONAL ACCESSORIES

UDK-1 “U” Die Adapter



## EP-510C

12 Ton Compression Tool  
w/Rubber Boot

### FEATURES

- Protective rubber boot on “C” head
- External pressure adjustment
- UL classified

The **EP-510C** was engineered to accommodate all U-type dies currently used in existing 12 ton tools. It is one of Huskie’s most versatile tools since it takes a full range of connectors and lugs to 750 MCM. The jaw opening is 1.65” to accept larger splices up to 750 MCM. The EP-510C output tonnage is adjustable to 14 tons for some specific grounding applications.

### SPECIFICATIONS

Crimp Force	12 Ton
Weight	16.5 lbs.
Size	25”L
Jaw Opening	1.65”

### CONNECTOR RANGE

Lugs & Splices	Up to 750 MCM Cu & Al
----------------	-----------------------





---

# REMOTE COMPRESSION HEADS

---



## CN-58H

6 Ton Remote Compression  
C-Head – Rubber Boot

### FEATURES

- 3/8" Male screw type coupler provided
- Protective rubber boot on "C" head

The **CN-58H** remote operated "C" head requires an external pumping source of 10,000 psi. It accepts Kearney "O" type and Burndy "W" type dies. It is a service entrance compression tool and the smallest of our compression tool line. The head is lightweight for easy handling in hot stick applications. The tool is supplied with a 3/8" male screw type coupler and a carrying case.

### SPECIFICATIONS

Crimp Force	6 Ton
Weight	6 lbs.
Size	12"L
Jaw Opening	.95"

### CONNECTOR RANGE

Lugs	#6-500 MCM Cu
Splices	#6-4/0 Al
H-Tap	4/0-4/0 Al



## EP-630HA

6.2 Ton Dieless Remote  
C-Head – Rubber Boot

### FEATURES

- \*Designed to crimp Anderson connectors & other brand manufactured to ANSI C119.4
- Eliminates the need for dies
- Protective rubber boot on "C" head

The **EP-630HA** is a dieless remote head that requires an external 10,000 psi pumping source. It is designed to crimp Anderson connectors #10 str - 500 MCM bare Al and #10 sol - 500 MCM bare Cu. The EP-630HA is mostly used by electrical contractors who prefer dieless compression to circumferential compression. This tool is supplied with a 3/8" male, screw type coupler and carrying case.

\*The EP-630HA was designed to crimp Anderson style connectors, and other brand connectors manufactured to ANSI C119.4.

### SPECIFICATIONS

Crimp Force	6.2 Ton
Weight	6.5 lbs.
Size	10"L w/coupler
Jaw Opening	.9"
Center Opening	1.25"
Width	4.5"

### CONNECTOR RANGE

*Lugs & Splices	#6 AWG-750 MCM Al/Cu
-----------------	----------------------



## EP-750HA

6.2 Ton Flip-Top Dieless  
Remote C-Head

### FEATURES

- \*Designed to crimp Anderson connectors & other brand manufactured to ANSI C119.4
- Flip-top head design
- Eliminates the need for dies

The Huskie **EP-750HA** dieless, Anderson style head has a flip-top opening and a pull-pin locking mechanism to accept larger connectors up to 750 MCM. Output force is 6.2 tons, and 10,000 psi external pumping source is required. The EP-750HA is supplied with a 3/8" male, screw type coupler and a carrying case.

\*The EP-750HA was designed to crimp Anderson style connectors, and other brand connectors manufactured to ANSI C119.4.

### SPECIFICATIONS

Crimp Force	6.2 Ton
Weight	6.5 lbs.
Size	10"L w/coupler
Width	5.5"
Jaw Opening	1.5"

### CONNECTOR RANGE

*Lugs & Splices	#10 AWG-750 MCM Cu/Al
-----------------	-----------------------

# REMOTE COMPRESSION HEADS



## EP-410H

12 Ton Remote Compression C-Head – Rubber Boot

### FEATURES

- Protective rubber boot on “C” head

The **EP-410H** is a traditional C-head with a one-inch jaw opening. It will accept all “U” type dies currently used in 12 ton tools on today’s market. A 10,000 psi external pump is required to operate the C-head. The output pressure is 12 tons when the pump is set at 10,000 psi. After a compression is made on a lug or sleeve, an internal ram spring retracts the jaw when the pump pressure is relieved. The tool is supplied with a standard 3/8” male, screw type coupler but can be fitted with an opposite female coupler if requested. Carrying case included. When using any of these high-pressure tools, always use 10,000 psi rated non-conductive hose (NC-16 series).

### SPECIFICATIONS

Crimp Force	12 Ton
Weight	8.2 lbs.
Size	10”L
Jaw Opening	1”

### CONNECTOR RANGE

Lugs	#8-750 MCM Cu
Splices	#10-400 MCM Cu



## EP-410HT

12 Ton Remote Titanium Compression C-Head

### FEATURES

- Extremely lightweight titanium
- Hot stick applications

The unique, lightweight titanium head of the **EP-410HT** reduces its weight to just five pounds. This is an ideal weight for Hot Stick handling since it is easy to lift and effortless to control while making connections. Though more expensive than conventional 12 ton tools, operator preference and performance when handling this tool will save time and investment over the life of the product. The tool is supplied with a standard 3/8” male, screw type coupler but can be fitted with an opposite female coupler if requested. A carrying case is included. When using any of these high-pressure tools, always use 10,000 psi rated non-conductive hose (NC-16 series).

### SPECIFICATIONS

Crimp Force	12 Ton
Weight	5 lbs.
Size	10”L
Jaw Opening	1”

### CONNECTOR RANGE

Lugs	#8-750 MCM Cu
Splices	#10-400 MCM Cu



## EP-430H

12 Ton Remote Compression C-Head – Rubber Boot

### FEATURES

- Protective rubber boot on “C” head

The **EP-430H** is a remote C-head that requires an external 10,000 psi pumping source for operation. This unit has a larger jaw opening than our EP-410H. The 1-3/16” opening allows the user to compress larger splices up to 600 MCM. The EP-430H is a single-acting, spring return tool. Its trim design allows for easy handling in field applications. This unit is supplied with a 3/8” male, screw type coupler, metal carrying case and die tray. We recommend the use of our non-conductive, high pressure hose. The EP-430H accepts “U” type dies designed to fit all 12 ton tools. Unique features include a knurled handle shank, a pull die release button on top of the C-head, and a push button die release on the opposite jaw.

### SPECIFICATIONS

Crimp Force	12 Ton
Weight	10 lbs.
Size	11”L
Jaw Opening	1.2”

### CONNECTOR RANGE

Lugs	Up to 750 MCM Cu
Splices	Up to 600 MCM Cu

## EP-510HC

12 Ton Remote Compression  
C-Head – Rubber Boot



### FEATURES

- 3/8" Male screw type coupler provided
- Protective rubber boot on "C" head

### SPECIFICATIONS

Crimp Force	12 Ton
Weight	11 lbs.
Size	12.25"L
Jaw Opening	1.65"

### CONNECTOR RANGE

Lugs & Splices	Up to 750 MCM Cu
----------------	------------------

The **EP-510HC** is a remote C-head that requires an external 10,000 psi pumping source. It accepts all "U" type dies used with conventional 12 ton compression tools. The larger jaw opening of 1.65" accepts conductors and mid-span sleeve connections up to 750 MCM. The EP-510HC is supplied with a screw type, 3/8" male coupler, metal carrying case, and die tray. We recommend the use of our non-conductive high pressure hose.

## EP-510HK

12 Ton Remote Compression  
C-Head – Rubber Boot



### FEATURES

- 3/8" Male screw type coupler provided
- Protective rubber boot on "C" head

### SPECIFICATIONS

Crimp Force	12 Ton
Weight	13.5 lbs.
Size	14"L
Jaw Opening	1.5"

### CONNECTOR RANGE

Lugs	Up to 1033 MCM Stranded
Splices	477 ACSR

### OPTIONAL ACCESSORIES

UDK-1 "U" Die Adapter

The **EP-510HK** is a Kearney style tool which accepts PH-2, WH-2, and WH-3 style dies. It has 12 tons of output and is used for crimping up to 750 MCM lugs or splices. An external 10,000 psi pumping source is needed to develop 12 tons of compression force. The EP-510HK comes complete with a 3/8" male, screw type coupler and carrying case. When using any of these high-pressure tools, always use 10,000 psi rated non-conductive hose (NC-16 series).

# REMOTE COMPRESSION HEADS

## EP-610H

15 Ton Compression  
C-Head – 2" Jaw Opening



### FEATURES

- 3/8" Male screw type coupler provided
- Protective rubber boot on "C" head

### OPTIONAL ACCESSORIES

PU-15 "U" Die Adapter

### SPECIFICATIONS

Crimp Force	15 Ton
Weight	14.5 lbs. w/Battery
Size	14.5"L
Jaw Opening	2"

### CONNECTOR RANGE

Aluminum	#8 AWG-1250 MCM
Copper	#8 AWG-1500 MCM

The **EP-610H** is a remote C-head that requires an external 10,000 psi pumping source. It accepts all Huskie HT61 series and Burndy "P" type dies used in the Y-46. When used with a Huskie PU-15 die adapter it will accept all "U" type dies used with any 12 ton tool. This tool is primarily used for cables above 750 MCM or in cases where additional tonnage is required to compress larger lugs, terminals and sleeves on tension connections. It is most always used on larger underground cables up to 1000 MCM. The EP-610H is supplied with a 3/8" male, screw type coupler and carrying case. When using any of these high-pressure tools, always use 10,000 psi rated non-conductive hose (NC-16 series).

## EP-60WA (STEEL) EP-60WT (TITANIUM)

60 Ton Single Acting Compression Head



### FEATURES

- Removable base
- Oblong lifting ring
- Removable die cap for easy cable insertion
- Designed for ACSR & ACAR transmission & distribution cable
- Lightest 60 ton presses in the industry
- Ultra light titanium model available
- Extremely portable

### ORDER DATA

EP-60WB	60 Ton Single Acting Compression Head
EP-60WT	Titanium Model

### SPECIFICATIONS

Crimp Force	60 Ton
Weight	43.5 lbs. (steel) 34 lbs. (titanium)
Size	6"W x 17"H
Cable Capacity	2.4" OD
Die Style	HA60-Series
Ram Stroke	1.5" Travel
Oil Volume	312 cc

### CONNECTOR RANGE

Lugs	Up to 2000 MCM Cu/Al
Splices	Up to 2500 MCM Cu/Al

The **EP-60WA** is the lightest single acting 60 ton press in the industry that is designed to compress sleeves and lugs on ACSR and ACAR transmission and distribution cables. They are also ideal for substation construction and are operable from any 10,000 psi pumping source with proper oil capacity. These tools are made to be portable for easy maneuverability, unlike other brands. The EP-60WB can be operated, utilizing the oblong lifting ring with use of a lifting rig. The EP-60WA series will readily accept any shell type dies currently used with Alcoa or Burndy 60 ton presses. Dies not listed can be made to specification; consult Huskie for more information.

The EP-60WA series is also offered in titanium. Titanium has the strength of steel but weighs nearly 30 percent less. Due to its lighter weight and the tool's portable design, the chance of back and muscle strain is greatly reduced. The titanium 60 ton press is easily maneuvered where heavy steel presses are almost impossible to operate, making it an ideal tool for jobs such as helicopter line installations.

**NOTE:** When using any of these high-pressure tools, always use 10,000 psi rated non-conductive hose (NC-16 series).

## EP-60D (STEEL) EP-60DT (TITANIUM)

### 60 Ton Double Acting Compression Head



#### FEATURES

- Removable base
- Oblong lifting ring
- Removable die cap for easy cable insertion
- Designed for ACSR & ACAR transmission & distribution cable
- Double acting hydraulic cylinder for quicker return times
- Ultra light titanium model available
- Extremely portable

#### ORDER DATA

EP-60D	60 Ton Double Acting Compression Head
EP-60WDT	Titanium Model

#### SPECIFICATIONS

Crimp Force	60 Ton
Weight	47 lbs. (steel) 34 lbs. (titanium)
Size	6"W x 17"H
Cable Capacity	2.4" OD
Die Style	HA60-Series
Ram Stroke	1.5" Travel
Oil Volume	303 cc

#### CONNECTOR RANGE

Lugs	Up to 2000 MCM Cu/Al
Splices	Up to 2500 MCM Cu/Al

The **EP-60D** series is a double acting 60 ton compression head. Double acting tools will eliminating the possibility of the tool jamming. Double acting means hydraulically advancing the ram to build the proper tonnage, then the hydraulic pressure is reversed to retract the ram. This will ensure the ram to retract without having to pry the jaws apart to release them and it will also retract much faster than single acting spring release tools.

The Titanium version EP-60DT, has the strength of steel but weighs nearly 30% less. Due to its lighter weight and the tool's portable design, the chance of back and muscle strain is greatly reduced. The titanium 60 ton press is easily maneuvered where heavy steel presses are almost impossible to operate making it an ideal tool for jobs such as helicopter line installations.

**NOTE:** When using any of these high-pressure tools, always use 10,000 psi rated non-conductive hose (NC-16 series).

## EP-100WD

### 100 Ton Double Acting Compression Head



#### FEATURES

- Designed for full tension transmission & substation connections
- Double acting hydraulic cylinder for quicker return times
- Lightest weight model in its class
- Removable die cap for easy cable insertion



**NEW RECESSED BOTTOM LIFTING RING**

#### SPECIFICATIONS

Crimp Force	100 Ton
Weight	78 lbs.
Size	9.5"W x 15"H
Max. Pressure	10,000 psi
Oil Required	25 cu/in
Ram Stroke	1.16"

The **EP-100WD** is the 100 ton compression head for full tension, transmission and substation connections and require an external 10,000 psi pumping source. The EP-100WD will accept shell-type dies currently used with Alcoa 100 ton compression heads. This double acting compression head is designed to operate from Huskie Tools pump models R-14EAD, HPG-5 or any 3/4 HP high-pressure, double-acting pump with the proper oil capacity. Double acting means hydraulically advancing the ram to build proper tonnage, then the hydraulic pressure is reversed to retract the ram. This will eliminate all possibilities of the connector hanging up or the tool jamming. The EP-100WD is the lightest weight model in its class and has removable die caps for easy connector positioning and 3/8" screw-type couplers.

**NOTE:** When using any of these high-pressure tools, always use 10,000 psi rated non-conductive hose (NC-16 series).



# REMOTE COMPRESSION HEADS

## EP-200WA

200 Ton Double Acting  
Compression Head



### FEATURES

- Designed for full tension transmission & substation connections
- Double acting hydraulic cylinder for quicker return times
- Lightest weight model in its class
- Removable die cap for easy cable insertion

### SPECIFICATIONS

Crimp Force	200 Ton
Weight	96 lbs.
Size	7.5"W x 14"H
Max. Pressure	10,000 psi
Oil Volume	1134 cc
Ram Stroke	1.57" Travel

The **EP-200WA** is the 200 ton compression head for full tension, transmission and substation connections and require an external 10,000 psi pumping source. This double acting compression head is designed to operate from Huskie Tools pump models R-14EAD, HPG-5 or any 3/4 HP high-pressure, double-acting pump with the proper oil capacity. Double acting means hydraulically advancing the ram to build proper tonnage, then the hydraulic pressure is reversed to retract the ram. This will eliminate all possibilities of the connector hanging up or the tool jamming. The EP-200WA is the lightest weight model in its class and has removable die caps for easy connector positioning and 3/8" screw-type couplers.

**NOTE:** When using any of these high-pressure tools, always use 10,000 psi rated non-conductive hose (NC-16 series).



---

# COMPRESSION DIES

---

# COMPRESSION DIES

## HT58-SERIES

Equivalent to Brundy "W" Type Dies for 4-6 Ton Tools



### FEATURES

- Fits all existing tools accepting "W" type dies
- Marked with Huskie and equivalent Brundy "W" die number
- Nickel plated

HUSKIE	BURNDY EQUIVALENT	HUSKIE	BURNDY EQUIVALENT	HUSKIE	BURNDY EQUIVALENT
HT58AE	W-K840	HT58DE	W-236	HT58AW	W-2CRT
HT58BX	W-161	HT58DG	W-238	HT58AU	W-4CRT
HT58BZ	W-162	HT58DH	W-239	HT58AT	W-5CRT
HT58CB	W-163	HT58DK	W-241	HT58AY	W-25RT
HT58CD	W-164	HT58DM	W-243	HT58AZ	W-26RT
HT58CE	W-165	HT58DP	W-245	HT58BA	W-27RT
HT58CF	W-166	HT58DT	W-247	HT58BC	W-28RT
HT58CG	W-167	HT58DV	W-248	HT58BE	W-29RT
HT58CM	W-171	HT58DW	W-249	HT58BF	W-30RT
HT58G*	W-BG	HT58DY	W-251	HT5BJ	W-31RT
HT58J	W-C	HT58KA	W-687	HT58BK	W-32RT
HT58AK	W-O	HT58KH	W-702	HT58BL	W-34RT
HT58CUT	CUTTER	HT58AF	W-L		
		HT58K	WKK		

HUSKIE 6 TON DIE	BURNDY EQUIVALENT	NICOPRESS EQUIVALENT	HUSKIE	CSA EQUIVALENT
HT58BX	W-161	J	HT58PA	CSA-20
HT58BZ	W-162	M & P	HT58PB	CSA-22
HT58CB	W-163	X	HT58PC	CSA-24
HT58CM	W-171	T		

\*HT588G is the only die with a double crimp

## HT-SERIES

Equivalent to Kearney "O" Type Dies for 4-6 Ton Tools



### FEATURES

- Fits all existing tools accepting "O" type dies
- Stamped with Kearney die size
- Nickel plated

HUSKIE	KEARNEY EQUIVALENT	HUSKIE	KEARNEY EQUIVALENT	HUSKIE	CSA EQUIVALENT
HT-B	B	HT-510	510 (HEX)	HTCSA-20	CSA-20
HT-D	D	HT-635	635 (HEX)	HTCSA-22	CSA-22
HT-D3	D3	HT-747	747 (HEX)	HTCSA-24	CSA-24
HT-J	J	HT-316	3/16		
HT-K	K	HT-14	1/4		
HT-O	O	HT-516	5/16		
HT-P	P	HT-38	3/8		
HT-T	T	HT-12	1/2		
HT-737	737	HT-916	9/16		
HT-781	781	HT-1932	19/32		
HT-840	840	HT-58-1	5/8-1		
HT-845	845	HT-1116	11/16		

## HT41-SERIES

Equivalent to Brundy & Kearney  
"U" Type Dies for 12 Ton Tools



### FEATURES

- Fits all existing tools accepting "U" style dies
- Marked with Huskie and equivalent Burndy "U" die number, or Alcoa "B" die number, or Kearney die size
- Die nest engraved with Huskie die number suffix

HUSKIE	ALCOA EQUIVALENT	HUSKIE	ALCOA EQUIVALENT	HUSKIE	CSA EQUIVALENT	HUSKIE	CSA EQUIVALENT
HT4107	74SH-03SH	HT4131	72AH	HT41PA	CSA-20	HT41PH	CSA-24CU
HT4108	75SH-05SH	HT4132	73AH-08AH	HT41PB	CSA-22	HT41PI	CSA-26CU
HT4109	76SH	HT4140	07CD	HT41PC	CSA-24	HT41PJ	CSA-28CU
HT4111	11AH	HT4141	08CD	HT41PD	CSA-26	HT41PK	CSA-30WCU
HT4120	20AH-14AH	HT4142	09CD	HT41PE	CSA-28	HT41PM	CSA-1
HT4128	74AH-10AH	HT4155	72SH-01SH	HT41PF	CSA-30W	HT41PN	CSA-2
HT4129	75AH-12AH	HT4156	73SH	HT41PL	CSA-20CU	HT41PZ	CSA-3
HT4130	76AH	HT4180	13AH-80EA	HT41PG	CSA-22CU		

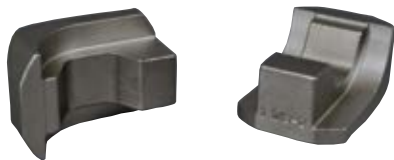
  

HUSKIE	BURNDY EQUIVALENT	HUSKIE	BURNDY EQUIVALENT	HUSKIE	BURNDY EQUIVALENT	HUSKIE	KEARNEY EQUIVALENT
HT41G	U-BG	HT41DG	U-238	HT41AT	U5CRT	HT41KA	1/4
HT41J	U-C	HT41DH	U-239	HT41AY	U25RT	HT41KB	3/8
HT41V	U-D	HT41DL	U-242	HT41AV	U26RT	HT41KC	5/16
HT41X	U-D3	HT41DM	U-243	HT41BA	U27RT	HT41KD	1/2
HT41Y	U-E	HT41DP	U-245	HT41BC	U28RT	HT41KE	9/16
HT41Z	U-F	HT41DT	U-247	HT41BE	U29RT	HT41KF	19/32
HT41AB	U-H	HT41DV	U-248	HT41GF	U2CABT	HT41KG	5/8-1
HT41AF	U-L	HT41DW	U-249	HT41GM	U4CABT	HT41KH	11/16
HT41AG	U-M	HT41DY	U-251	HT41GE	U6CABT	HT41KI	3/4
HT41AJ	U-N	HT41DZ	U-252	HT41GL	U8CABT	HT41KK	29/32
HT41AK	U-O	HT41EK	U-261	HT41BF	U30RT	HT41KL	15/16
HT41AM	U-R	HT41FG	U-305	HT41BJ	U31RT	HT41KM	1-2
HT41BX	U-161	HT41FM	U-316	HT41BK	U32RT	HT41KN	1-1/8-2
HT41BZ	U-162	HT41FN	U-317	HT41BL	U34RT	HT41KO	1-1/2-2
HT41CB	U-163	HT41FU	U-321	HT41BM	U36RT	HT41KP	510
HT41CD	U-164	HT41FX	U-327	HT41BP	U39RT	HT41KQ	572
HT41CE	U-165	HT41GK	U-373	HT41EX	U25ART	HT41KR	635
HT41CF	U-166	HT41GX	U-468	HT41EY	U26ART	HT41KS	737
HT41CG	U-167	HT41HM	U-490	HT41GW	U27ART	HT41KT	747
HT41CJ	U-168	HT41JM	U-654	HT41EZ	U28ART	HT41KU	781
HT41CK	U-169	HT41JN	U-655	HT41FW	U29ART	HT41KV	BKT
HT41CL	U-170	HT41JP	U-658	HT41GZ	U30ART	HT41AE	840
HT41CT	U-203	HT41JR	U-659	HT41FA	U31ART	HT41U	U
HT41DE	U-236	HT41KJ	U-705	HT41HH	U32ART	HT41KX	727
HT41DF	U-237	HT41LG	U-788	HT41FB	U34ART		
		HT41NC	U-997	HT41HG	U36ART	UDK-1	U DIE ADAPTER
		HT41AE	U-K840	HT41LJ	U39ART2		
		HT41AX	U1CRT	HT41CUT	CUTTER DIES		
		HT41AW	U2CRT	HT41TEST	TEST DIES		
		HT41AZ	U3CRT				
		HT41AU	U4CRT				

# COMPRESSION DIES

## HTK-SERIES

Equivalent to Kearney "WH-2" (10.7 Ton) & "WH-3" (12 Ton) Type Dies



HUSKIE	KEARNEY EQUIVALENT	HUSKIE	KEARNEY EQUIVALENT	HUSKIE	KEARNEY EQUIVALENT	HUSKIE	KEARNEY EQUIVALENT
HTK	BKT	HTK-510	510	HTK-14	1/4	HTK-34H	3/4 (HEX)
HTK-C	C	HTK-572	572	HTK-516	5/16	HTK-2932H	29/32 (HEX)
HTK-D	D	HTK-635	635	HTK-38	3/8	HTK-1516	15/16
HTK-N	N	HTK-727	727	HTK-12	1/2	HTK-1-2H	1-2 (HEX)
HTK-N-2	N (WH-3 Only)	HTK-737	737	HTK-916	9/16	HTK-1-18-2H	1-1/8
HTK-O	O	HTK-747	747	HTK-1932	19/32	HTK-1-516H	1-5/16 (HEX)
HTK-P	P	HTK-781	781	HTK-58-1	5/8-1	HTK-1-12H	1-1/2 (HEX)
HTK-U	U	HTK-840	840	HTK-1116	11/16	HTK-1-12H3	1-1/2 (WH-3 ONLY)
						UDK-1	U DIE ADAPTER

### FEATURES

- Stamped with Kearney die size
- Nickel plated



UDK-1

"U" Die Adapters

UDK-1 is a "U" die adapter for Kearney-style, 12 ton tools (REC-5510K and REC-3510K).

## HT61-SERIES

Equivalent to Burndy "P" Type Dies for 15 Ton Tools



### FEATURES

- Fits all existing Y46 heads accepting "P" type dies
- Marked with Huskie and equivalent Burndy "P" type dies
- Polished die nest

HUSKIE	BURNDY EQUIVALENT	HUSKIE	BURNDY EQUIVALENT	HUSKIE	CSA EQUIVALENT
HT61BP	P39RT	HT61FC	P39ART	HT61PF	CSA-30
HT61BR	P40RT	HT61HJ	P40ART	HT61PK	CSA-30CU
HT61BU	P44RT	HT61FD	P44ART	HT61PO	CSA-32
HT61BV	P46RT	HT61AC	PKR	HT61PP	CSA-32CU
HT61KX	P-724	HT61AJ	PN	HT61PQ	CSA-34
PU-15	DIE ADAPTER			HT61PR	CSA-34CU



PU-15

"U" Die Adapters

PU-15 is a "U" die adapter for our 15 ton compression tools.

**Huskie Dies** are configured to be equivalent to Burndy dies of respective size. When using Huskie HT series dies consult the connector manufacturer for their recommended die cross referencing and application instructions. All Huskie dies are machined or cast from solid steel stock and case hardened to 45-50 HRC and are guaranteed for 10,000 operations. These dies are also marked with HT numbers and Burndy cross reference numbers to make cross referencing easy and less confusing. The following chart lists Huskie and equivalent Burndy numbers for reference only. Other manufacturer die numbers are also listed to aid the user in selecting the proper die cross reference numbers when using a particular connector. All connectors are different and the connector manufacturer should be consulted in each case. Many manufacturers offer different size connectors for the same wire size. Huskie Tools, Inc. is not responsible in the event of misuse or misapplication of die sets. Huskie Tools is not a connector manufacturer, but a tool and die supplier.

APPROXIMATE Cu	CONDUCTOR RANGE Al	DIE COLOR RANGE	HUSKIE DIE SET CATALOG #	BURNDY INDEX	BURNDY DIE SET CATALOG No.	T&B INDEX
6 AWG	8 AWG	BLUE	H4AT/HT41GL	7/374	U5CRT/U8CABT	24
4 AWG	6 AWG	GREY	HT41AU/HT41GE	8/346	U4CRT/U6CABT	29
2 AWG		BROWN	HT41AW	10	U2CRT	33
1 AWG	4 AWG	GREEN	HT41AX	11	U1CRT	37
	4 AWG	GREEN	HT41GM	375	U4CABT	37
1/0 AWG	2AWG	PINK	HT41AY	12	U25RT	42H
	2 AWG	PINK	HT41GF	348	U2CABT	42H
2/0 AWG		BLACK	HT41AZ	13	U26RT	45
3/0 AWG		ORANGE	HT41BA	14	U27RT	50
	1/0 AWG	TAN	HT41EX	296	U25ART	50
4/0 AWG		PURPLE	HT41BC	15	U28RT	54H
	2/0 MCM	OLIVE	HT41EY	297	U26ART	54H
250 MCM		YELLOW	HT41BE	16	U29RT	62
	3/0 MCM	RUBY	HT41GW	467	U27ART	60
300 MCM		WHITE	HT41BF	17	U30RT	66
	4/0 MCM	WHITE	HT41EZ	298	U28ART	66
350 MCM		RED	HT41BJ	18	U31RT	71H
	250 MCM	RED	HT41FW	324	U29ART	71H
400 MCM		BLUE	HT41BK	19	U32RT	76
	300 MCM	BLUE	HT41GZ	470	U30ART	76
500 MCM		BROWN	HT41BL	20	U34RT	87H
	350 MCM	BROWN	HT41FA	299	U31ART	87H
600 MCM	400 MCM	GREEN	HT41HH/HT41BM	472/22	U32ART/U36RT	94H
	500 MCM	PINK	HT41FB	300	U34ART	99H
750 MCM		BLACK	HT41BP	24	U39RT	106H
	600 MCM	BLACK	HT41HG	473	U36ART	106H
	700/750 MCM	YELLOW	HT41LJ	936	U39ART-2	115H

**FOR REFERENCE ONLY! CONSULT YOUR CONNECTOR MANUFACTURER  
FOR EXACT CABLE, CONNECTOR AND DIE SELECTION.**



# COMPRESSION DIES

## WIRE ROPE DIES

12 Ton "U" Type Compression Dies



### FEATURES

- Designed for duplex oval sleeves and button stops
- For use on copper and aluminum only
- Fits in any 12 Ton tool that uses standard "U" dies

ITEM#	DESCRIPTION	ALUMINUM	COPPER
18AC	WIRE ROPE DIE 1/8" AC	1/8"	1/8"
316AC	WIRE ROPE DIE 3/16" AC	3/16"	3/16"
14AC	WIRE ROPE DIE 1/4" AC	1/4"	1/4"
516AC	WIRE ROPE DIE 5/16" AC	5/16"	5/16"
38AC	WIRE ROPE DIE 3/8" AC	3/8"	3/8"
716A12C	WIRE ROPE DIE 7/16" A, 1/2" C	7/16"	1/2"
716C	WIRE ROPE DIE 7/16" C		7/16"
12A	WIRE ROPE DIE 1/2" A	1/2"	

## HA60-SERIES

Equivalent to Alcoa 60 ton Dies



### FEATURES

- Fits all existing 60 ton presses accepting 60 ton shell type dies
- Marked with Huskie and equivalent Alcoa catalog number

HUSKIE	ALCOA EQUIVALENT	HUSKIE	ALCOA EQUIVALENT
HA60-01	6010SH	HA60-27	6040AH
HA60-02	6012SH	HA60-28	6074AH
HA60-03	6014SH	HA60-29	6075AH
HA60-04	6016SH	HA60-30	6076AH
HA60-05	6018SH	HA60-40	6007CD
HA60-06	6020SH	HA60-41	6008CD
HA60-07	6074SH	HA60-42	6009CD
HA60-08	6075SH	HA60-43	6010CD
HA60-09	6076SH	HA60-44	6011CD
HA60-20	6020AH	HA60-45	6012CD
HA60-21	6024AH	HA60-46	6013CD
HA60-22	6027AH	HA60-47	6014CD
HA60-23	6030AH	HA60-48	6015CD
HA60-24	6034AH	HA60-49	6016CD
HA60-25	6036AH	HA60-50	6017CD
HA60-26	6038AH		

## HA100-SERIES

Equivalent to Alcoa 6100 ton Dies



### FEATURES

- Fits all existing 100 ton presses accepting 100 ton shell type dies
- Marked with Huskie and equivalent Alcoa catalog number

HUSKIE	ALCOA EQUIVALENT	HUSKIE	ALCOA EQUIVALENT	HUSKIE	ALCOA EQUIVALENT
HA100-01	10010SH	HA100-24	10034AH	HA100-41	10008CD
HA100-02	10012SH	HA100-25	10036AH	HA100-42	10009CD
HA100-03	10014SH	HA100-26	10038AH	HA100-43	10010CD
HA100-04	10016SH	HA100-27	10040AH	HA100-44	10011CD
HA100-05	10018SH	HA100-28	10074AH	HA100-45	10012CD
HA100-06	10010SH	HA100-29	10075AH	HA100-46	10013CD
HA100-07	10074SH	HA100-30	10076AH	HA100-47	10014CD
HA100-08	10075SH	HA100-34	10042AH	HA100-48	10015CD
HA100-20	10020SH	HA100-36	10044AH	HA100-49	10016CD
HA100-21	10024SH	HA100-37	10046AH	HA100-50	10017CD
HA100-22	10027SH	HA100-38	10048AH	HA100-51	10018CD
HA100-23	10030SH	HA100-40	10007CD	HA100-52	10019CD
				HA100-53	10020CD

## DIE CASES

HTK-CASE, DIE-CASE & W-CASE



**HTK-CASE**



**DIE-CASE**



**W-CASE**

### HTK-CASE FEATURES

- Shock absorbing cushion of air between double walls
- Holds up to 10 die sets

### DIE-CASE FEATURES

- Holds 18 "U" type die sets or 8 "P" type die sets
- Constructed of heavyweight plastic

### W-CASE FEATURES

- Holds 12 "W" type die sets
- Constructed of heavyweight plastic

The **HTK-CASE** offers a convenient way to store your Huskie dies. The case is a custom molded case made with a shock absorbing cushion of air between sturdy double walls. It has ten individual compartments that will hold up to ten die sets. Will hold: HTK-Series, HT41 Series, HT58-Series and HT-Series dies.

The Huskie model **DIE-CASE** is offered as a stand alone die carrying case and is the same case supplied with the REC-3000 Series kits. It will hold either 18 "U" type die sets or 8 "P" type die sets. It is constructed of heavyweight plastic with a hinged see-through top for easy identification of die sets.

The **W-CASE** will hold 12 "W" dies from our HT58-Series.



---

# MANUAL CUTTING TOOLS

---

## S-SERIES

### Handheld Hydraulic Cutters

Huskie's **S-Series** tools cut anything from guy wire\* to anchor rod and most overhead and underground cables. The S-series cutters are portable, lightweight, and made to last years under the toughest field conditions. The S-40B and S-85 feature a two stage pumping piston for rapid advance.

The new S-240CC, S-32CC and SP-24CC hydraulic cutters were specially engineered to cut the toughest EHS guy wire, ground and anchor rods. The SP-24CC is the remote head version, which requires an external 10,000 psi pump in order to operate. The anvil style, center cut blades eliminate jamming problems common to shear style cutters, and the blades are easily replaced in the field. The tools are made of high grade steel and have rubber handle grips. All tools are black zinc oxide coated to help reduce corrosion. A flip-top latch opens the tool jaw to easily accept cables and wires. The head can be rotated up to 180° to facilitate easy wire positioning and operator leverage.

Consult the chart below to pick the proper cutter for your needs. If there are any questions about capacities, or special applications please contact Huskie Tools.

**\*NOTE:** DO NOT CUT EHS GUY WIRE. FOR EHS GUY WIRE SPECIFY S-240CC, S-32CC OR THE REMOTE HEADS SP-24CC OR SP-32CC1.

SPECIFICATIONS									
MODEL	S-16	S-20	S-240	S-32	S-40B	S-55B	S-85	S-240CC	S-32CC
Weight	6 lbs.	6 lbs.	9 lbs.	21 lbs.	12 lbs.	17 lbs.	15 lbs.	11 lbs.	23 lbs.
Length	15"L	15"L	17"L	27"L	23"L	24"L	26"L	18.5"L	27"L
Jaw Opening	.6"	.75"	.9"	1.25"	2.6"	2"	3.3"	.9"	1.25"

CAPACITIES									
Wire Ropes	16mm	20mm	22mm	32mm	20mm	26mm	Do Not Cut	Do Not Cut	Do Not Cut
	5/8"	3/4"	7/8"	1-1/4"	3/4"	1"			
Soft Steel Bolts	16mm	17mm	22mm	32mm	20mm	32mm	Do Not Cut	16mm	26mm
	5/8"	11/16"	7/8"	1-1/4"	3/4"	1-1/4"		5/8"	1"
Rebar, Ground & Anchor Rod	13mm	13mm	16mm	22mm	16mm	20mm	Do Not Cut	16mm	26mm
	1/2"	1/2"	5/8"	7/8"	5/8"	3/4"		5/8"	1"
Cu & Al Wire	16mm	20mm	22mm	32mm	40mm	50mm	76mm	Do Not Cut	Do Not Cut
	5/8"	3/4"	7/8"	1-1/4"	1-1/2"	2"	3"		
ACSR	16mm	20mm	22mm	32mm	40mm	50mm	Do Not Cut	Do Not Cut	Do Not Cut
	5/8"	3/4"	7/8"	1-1/4"	1-1/2"	2"			
Standard Guy Wire	13mm	14mm	16mm	22mm	13mm	20mm	Do Not Cut	14mm	22mm
	1/2"	1/2"	5/8"	7/8"	5/8"	3/4"		9/16" EHS	7/8" EHS
Telephone & Lead Sheathed Cable	Do Not Cut	Do Not Cut	Do Not Cut	Do Not Cut	Do Not Cut	Do Not Cut	85mm	Do Not Cut	Do Not Cut
							3.35"		
Chain	Do Not Cut	Do Not Cut	Do Not Cut	Do Not Cut	Do Not Cut	Do Not Cut	Do Not Cut	1/4"	1/2"

# MANUAL CUTTING TOOLS

## S-SERIES

Handheld Hydraulic Cutters



S-16



S-20



S-240



S-240CC



S-32



S-32CC



S-40B



S-55B



S-85



## RI-500

### Ratchet Cable Cutter

#### FEATURES

- Longer handles for leverage
- Thumb lever to release the blade
- Carrying pouch included

The **RI-500** has an ergonomic handle design gives you extra leverage at the bottom and is narrowed at the top for easier handling. The durable handles are made of a high visibility, orange plastic. Its cutting head is black oxide coated to help reduce corrosion.

**NOTE:** DO NOT CUT STEEL.

#### SPECIFICATIONS

Weight	1.5 lbs.
Size	10"L
Handle Span	5.5"

#### CUTTING CAPACITIES

1.25" OD Al  
500 MCM Cu



## R-750C

### Ratchet Cable Cutter

#### FEATURES

- Thumb lever to release the blade
- Ratchet system

The **R-750C** ratchet cable cutter blades have a 100% cutting surface which provides the best possible cutting leverage. A thumb release lever allows the operator to back out of a cut when necessary. A locking mechanism closes the handles for easy storage.

**NOTE:** DO NOT CUT STEEL.

#### SPECIFICATIONS

Weight	2 lbs.
Size	9"L
Handle Span	6.5"

#### CUTTING CAPACITIES

1.75" OD Al  
750 MCM Cu



## NP-400

### Insulation Stripper

The Huskie **NP-400** can strip insulation from a conductor with an O.D. of .35" to 1-1/4" and a maximum insulation thickness of 3mm (.118). This tool will not work on semi-conductor since the cutting blade uses a scoop design to pull insulation away from the wire strands. It is most commonly used on jacketed aluminum and copper cables for both underground and overhead. Our peeler can handle mid-span stripping as well as cable end preparation. A simple rotation and hand force is all it takes to remove the jacket. Either handle can be removed for close quarter operation. It is necessary to change the blade depth according to the insulation thickness. Send cable samples to Huskie Tools for testing.

**NOTE:** Not for removing semiconductor jackets.

#### FEATURES

- Capable of midspan stripping
- Up to 1-1/4" OD
- Copper & aluminum
- Spring load

#### ACCESSORY

400-10	Replacement Blade
--------	----------------------



---

# REMOTE CUTTING HEADS

---



## SP-SERIES

Hydraulic Operated  
Remote Cutting Heads

### FEATURES

- Lightweight and portable
- Operate from any 10,000 psi hydraulic source
- Works in any position

The **SP-SERIES** remote head units connect to any 10,000 psi, high pressure, hydraulic pumping system. Choose from ten different models of cutters, to cut costs and efforts. A 3/8" screw-type male coupler is supplied with each tool. Huskie Tools remote cutters have a hinged head which can be opened for easy cable or bar insertion. The movable blade advances in a shear fashion, to cut the material cleanly. When the cutting pressure is relieved an internal ram spring retracts the blade. The guillotine cutting style was chosen over scissor type cutting because of its powerful output force, larger cable capacities, compact size and reliability.

All tools can be used under water, consult factory for specific applications.

**NOTE:** FOR EHS GUY WIRE SPECIFY S-24CC, S-32CC OR THE REMOTE HEAD SP-24CC.

### SPECIFICATIONS

MODEL	SP-20	SP-24	SP-24CC	SP-32	SP-32CC1		SP-40	SP-55	SP-85	SP-100
Weight	3 lbs.	6 lbs.	6 lbs.	21 lbs.	26 lbs.		8.5 lbs.	20 lbs.	16 lbs.	29 lbs.
Length	8"L	11"L	11"L	14"L	13.5"L		12"L	17"L	19"L	24"L
Jaw Opening	.75"	.9"	.9"	1.25"	1.25"		1.6"	2"	3.3"	4"

### CAPACITIES

Wire Ropes	20mm	22mm	Do Not Cut	32mm	Do Not Cut		20mm	26mm	Do Not Cut	Do Not Cut
	5/8"	11/16"		1-1/4"			3/4"	1"		
Soft Steel Bolts	14mm	20mm	16mm	32mm	26mm		16mm	32mm	Do Not Cut	Do Not Cut
	9/16"	3/4"	5/8"	1-1/4"	1"		5/8"	1-1/4"		
Rebar, Ground & Anchor Rod	13mm	16mm	16mm	26mm	26mm		16mm	20mm	Do Not Cut	Do Not Cut
	1/2"	5/8"	5/8"	1"	1"		5/8"	3/4"		
Cu & Al Wire	20mm	22mm	Do Not Cut	32mm	Do Not Cut		40mm	50mm	76mm	3-1/2"
	3/4"	7/8"		1-1/4"			1-1/2"	2"	3"	
ACSR	20mm	22mm	Do Not Cut	32mm	Do Not Cut		40mm	50mm	Do Not Cut	Do Not Cut
	3/4"	7/8"		1-1/4"			1-1/2"	2"		
Standard Guy Wire	14mm	16mm	14mm	22mm	22mm		16mm	20mm	Do Not Cut	Do Not Cut
	1/2"	5/8"	9/16" EHS	7/8"	7/8" EHS		5/8"	3/4"		
Chain	Do Not Cut	Do Not Cut	1/4"	Do Not Cut	1/2"		Do Not Cut	Do Not Cut	Do Not Cut	Do Not Cut
Comm. Cables	Do Not Cut	Do Not Cut	Do Not Cut	Do Not Cut	Do Not Cut		Do Not Cut	Do Not Cut	3.35"	4"
Lead Sheath Cables	Do Not Cut	Do Not Cut	Do Not Cut	Do Not Cut	Do Not Cut		Do Not Cut	Do Not Cut	3.35"	4"

# REMOTE CUTTING HEADS

## SP-SERIES

Hydraulic Operated Remote Cutting Heads



SP-20



SP-24



SP-24CC



SP-32



SP-32CC1



SP-55



SP-40



SP-100



SP-85

## YSP-SERIES

### Scissor Cutter Remote Heads



YSP-30



YSP-34



YSP-60



YSP-85YC

#### SPECIFICATIONS

MODEL	YSP-30	YSP-34	YSP-60	YSP-85YC
Output	4.4 Ton	4.4 Ton	4.4 Ton	8 Ton
Weight	6 lbs.	6 lbs.	6 lbs.	10.5 lbs.
Length	12"	12"	12"	18"

#### CAPACITIES

ACSR	477	Do Not Cut	Do Not Cut	Do Not Cut
Copper	500 MCM*	800 MCM	750 MCM	1000 MCM
Aluminum	1.18" OD	1.24" OD	1.18" OD	3"
Telecommunications	Do Not Cut	Do Not Cut	Do Not Cut	3"
Lead Sheath	Do Not Cut	Do Not Cut	Do Not Cut	2.5"

\* Will not cut ALL 500 MCM copper cable-consult factory.

## DA-12 Hydraulic Cable Cutter



#### FEATURES

- Operates on 2500 psi
- Safety trigger
- Double acting system
- 4" Jaw opening

The **DA-12** hydraulic handheld, cable cutter can be operated directly from the utility line truck. At 2,500 psi pressure, it can cut 4" lead sheath cables as well as 4200 pair communications cables. A 6 ton cutting force is produced at 2,500 psi pressure, less than 2,500 psi will reduce the cutting capacity. It operates on open center trucks and comes with HTMA couplers. The 4" jaws slice through lead, copper and aluminum cables cleanly and without jamming because of the double-acting system. The DA-12 is portable, with nonslip, knurled handles and a safety ring. It has a positive open and close position and a special built-in safety trigger. It stops when you stop.

#### SPECIFICATIONS

Output	6 Ton at 2,500 psi
Weight	31 lbs.
Size	15" x 15" x 17"

#### CUTTING CAPACITIES

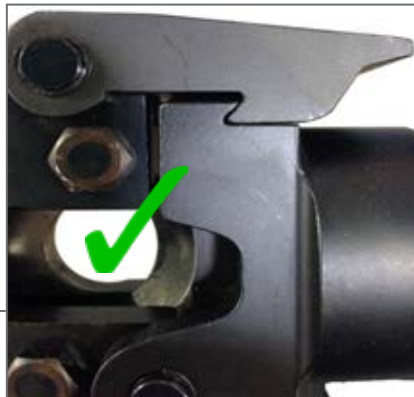
Lead Sheath	4"
Comm. Cables	4200 pair

# CUTTING INSTRUCTIONS

By keeping the conductor at a 90 degree angle to the blade and as deep as possible in the jaw, users will minimize blade stress and ultimately blade breakage.

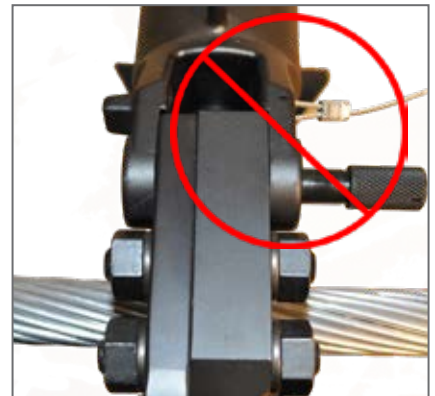
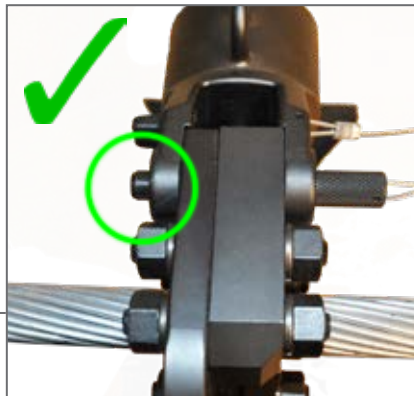
## EXAMPLE

Make sure latch is seated in proper position.



## EXAMPLE

Make sure pin latch is fully in before cutting the material.



## EXAMPLE

The material being cut should be a 90 degree angle to the blades, otherwise it will cause the blades to spread apart and possibly break.



## EXAMPLE

When using scissor type jaws - have the conductor at a 90 degree angle.





---

# HYDRAULIC PUMPS

---

# HYDRAULIC PUMPS

## R-14EA

3/4 HP, 10,000 psi  
Single Acting Hydraulic Pump



### FEATURES

- Remote operation allows full operator control
- Manual and automatic mode for additional versatility
- 3/4 HP rating
- Low amperage requirement

### SPECIFICATIONS

Weight	75 lbs. w/Oil
Size	14"L x 16"H x 13.25"W
Power Output	3/4 HP - 8.2 Amp
Delivery @ 300 psi	157 in <sup>3</sup> /min
Delivery @ 10,000 psi	36 in <sup>3</sup> /min
Oil Capacity	182 cu/in (3 quarts)

### OPTIONAL ACCESSORIES

FS-14	Foot Switch
URH-14	Remote Control Handle

The **R-14EA** has a two button hand control allows the user to advance, hold, or release at any time. When 10,000 psi is reached, the pump will automatically shut off and hold until the operator pushes the release button to retract the tool. There is an auto cycle switch that allows the operator to push the advance button and the pump will automatically advance, run to 10,000 psi and release. A remote foot control pedal is optional.

**NOTE:** When using any of these high pressure tools, always use 10,000 psi rated non-conductive hose (NC-16 Series).

## R-14EAD

3/4 HP, 10,000 psi  
Double Acting Hydraulic Pump



### FEATURES

- Remote operation allows full operator control
- Manual and automatic mode for additional versatility
- Low amperage requirement

### SPECIFICATIONS

Weight	75 lbs. w/Oil
Size	14"L x 16"H x 13.25"W
Power Output	3/4 HP - 8.2 Amp
Delivery @ 300 psi	157 in <sup>3</sup> /min
Delivery @ 10,000 psi	36 in <sup>3</sup> /min
Oil Capacity	182 cu/in (3 quarts)

### OPTIONAL ACCESSORIES

FS-14	Foot Switch
-------	-------------

The **R-14EAD** has a hand control allows the user to advance or release at any time. There is an auto cycle switch that allows the operator to push the advance button and the pump will automatically advance, run to 10,000 psi and release. A remote foot control pedal is optional.

**NOTE:** When using any of these high pressure tools, always use 10,000 psi rated non-conductive hose (NC-16 series).



## HPG-4

4 HP, Gas Engine 10,000 psi  
Hydraulic Pump



### FEATURES

- Four way valve allows for single or double acting capacity
- Standard screw type male and female couplers



**RC-5**  
Optional Roll/Carry Cage

### SPECIFICATIONS

Weight	74 lbs. w/Oil
Oil Capacity	5 Gallons
Fuel Tank Capacity	3 Pints
Max Pressure	10,000 psi
Power Output	4 HP
Delivery @ 100 psi	480 in <sup>3</sup> /min
Delivery @ 10,000 psi	55 in <sup>3</sup> /min
Fuel	Unleaded Gas Only

The **HPG-4** is a self-contained high pressure pump, with manual operation. It is equipped with a 4 HP Briggs & Stratton engine. A four-way valve controls the hydraulic fluid direction for the advance and retract modes. One double acting tool can be operated or two single acting tools at one time. Connection to one port for single acting tools will work since the control valve will dump the fluid when shifted to the retract position. The pump is very compact and comes with carrying handles.

**NOTE:** When using any of these high pressure tools, always use 10,000 psi rated non-conductive hose (NC-16 series).

## HPM-P3

5.5 HP, Gas Engine 10,000 psi  
Hydraulic Pump



### FEATURES

- Inline pressure gauge located on valve for easy reading
- Supplied with carrying cage and castors for easy maneuvering
- High efficiency and fast working gasoline pump
- Better fuel consumption and engine performance
- Oil sight gauge
- Easy pressure valve adjustments

### SPECIFICATIONS

Engine Type	Honda Air-cooled 4-stroke OHV
Oil Capacity	2.5 Gallons
Power Output	5.5 HP @3600 RPM
Max Pressure	10,000 psi
Oil Delivery @Low Pressure	2.6 Gallons/min
Oil Delivery @High Pressure	.63 Gallons/min
Fuel	Unleaded Gas Only
Weight	105 lbs.

The **HPM-P3** is a self-contained high pressure pump, with manual operation. It is equipped with a 5.5 HP Honda engine. A four-way valve controls the hydraulic fluid direction for the advance and retract modes. One, double-acting tool can be operated or two, single-acting tools at one time. Connection to one port for single acting tools will work since the control valve will dump the fluid when shifted to the neutral position.

**NOTE:** When using any of these high pressure tools, always use 10,000 psi rated non-conductive hose (NC-16 series).



# HYDRAULIC PUMPS

## R-14EH

1/2 HP, 10,000 psi  
Hydraulic Pump



### FEATURES

- Remote operation allows full operator control
- Advance and hold feature standard
- Manual control directly on pump motor
- Pressure adjustment from 4,000-10,000 psi

### SPECIFICATIONS

Weight	33.2 lbs. w/Oil
Size	9.5"L x 15.5"H x 10.5"W
Power Output	1/2 HP - 6.5 Amp
Delivery @ 200 psi	157 in <sup>3</sup> /min
Delivery @ 10,000 psi	19 in <sup>3</sup> /min
Oil Capacity	120 cu/in (2 quarts)

The **R-14EH** remote operated pump gives the operator complete control. Push buttons permit the user to advance and retract at will. The user is never committed to a full cycle, and can always back off at any time during the advance even under pressure. A 10-foot remote control cable provides both safety and convenience. The user can set up an operation and then move away from the work site before engaging the tool. An over-ride switch on the pump allows full control at the pump motor. The low amperage of this pump allows it to be used virtually anywhere. Consult factory for proper adjusting procedure.

**NOTE:** When using any of these high pressure tools, always use 10,000 psi rated non-conductive hose (NC-16 series).

## REC-P1

10,000 psi 28.8 Volt Pump



### FEATURES

- Powerful 28.8 Volt
- Operate up to single acting 60 Ton press
- Adjustable 10,000 psi
- Eliminates the need for AC power
- Compact and portable

### SPECIFICATIONS

Output	10,000 psi
Weight	23 lbs. w/2 Batteries
Size	16"L x 6"H x 10"W

### CRIMPING ESTIMATES

	BP-84
Using a 10ft. hose & EP-60W on 1272 ACSR	12
No Load Cycle Time	Advanced 25 seconds Retract 30 seconds

The Huskie **REC-P1** is supplied with a push button remote control that allows the operator to advance, hold, and retract when needed. The user is never committed to a full cycle and can always back off at any time during the advance— even when the pump is under pressure. High pressure, non-conductive hose can be attached to a 360° moveable swivel port on the pump. This swivel port allows the user to position the hose to fit in confined aerial buckets and manholes. Both batteries must be inserted in the pump to operate. We recommend you specify the Huskie SC-Series flush face dripless couplers, as not to deplete the oil in the reservoir when changing heads.



## REC-P1CASE

### Steel Carrying Case

The **REC-P1CASE** steel carrying case stores and carries Huskie Tools Pumps and accessories like extra batteries and crimping heads. Also fits the R-14EF.



## HP-700

10,000 psi  
Hydraulic Hand Pump

### FEATURES

- Two-stage pump piston for rapid advance
- External pressure adjustment from 4,000-10,000 Psi
- Can be operated in any position
- Knob type release valve

The **HP-700** has an internal oil bladder allows the tool to be used in any position. Our exclusive replaceable, by-pass cartridge is standard in the HP-700. Use our PG-1 gauge for pressure adjustments.

**NOTE:** When using any of these high pressure tools, always use 10,000 psi rated non-conductive hose (NC-16 Series).

### SPECIFICATIONS

Weight	20 lbs.
Size	23"L
Oil Reservoir	44 cu/in fluid
1st Stage	.75 in <sup>3</sup> per stroke
2nd Stage	.14 in <sup>3</sup> per stroke



## FP-700

10,000 psi  
Hydraulic Foot Pump

### FEATURES

- Two-stage pump piston for rapid advance
- External pressure adjustment from 4,000-10,000 Psi
- Can be operated in any position
- Knob type release valve

The **FP-700** has an internal oil bladder allows the tool to be used in any position. Our exclusive replaceable, by-pass cartridge is standard in the HP-700. Use our PG-1 gauge for pressure adjustments.

**NOTE:** When using any of these high pressure tools, always use 10,000 psi rated non-conductive hose (NC-16 Series).

### SPECIFICATIONS

Weight	20 lbs.
Size	23"L
Oil Reservoir	44 cu/in fluid
1st Stage	.75 in <sup>3</sup> per stroke
2nd Stage	.14 in <sup>3</sup> per stroke

# HYDRAULIC PUMPS

## REC-P600

Battery Operated  
Hydraulic Pump



SPECIFICATIONS	
Weight	19.2 lbs. w/Batteries
Size	15"L x 9.6"H x 8.25"D

FEATURES	
<ul style="list-style-type: none"><li>• Ability to work off of 1 or 2 batteries</li><li>• Weighs just 19 pounds</li><li>• Small design fits in tight spaces</li><li>• 360° swivel coupler</li><li>• Remote for advance and retract of ram</li><li>• Compatible with all Huskie 14.4V batteries</li></ul>	

The **REC-P600** not only utilizes a smaller design to fit into tighter spaces, but also has the ability to work off of one or two batteries. The REC-P600 is four pounds lighter than the REC-P1. The REC-P600 is supplied with a push button remote control that allows the operator to advance, hold, and retract when needed.

## REC-P600R

Wireless Remote Controlled  
Hydraulic Pump



FEATURES	
<ul style="list-style-type: none"><li>• Operated Through Exclusively Paired Wireless Remote</li><li>• Allows Operation at Safe Distance in Case of Arc Flash</li><li>• Transmitter/Receiver System is FCC, CE &amp; IC Approved</li><li>• Durable Remote is Rated to IP65</li><li>• On/Off Switch to Further Ensure Safe Operation</li><li>• 5 Year Warranty</li></ul>	

SPECIFICATIONS	
Output	10,000 psi
Weight	10.2 lbs. w/2 Battery
Size	15"L x 9.6"H x 8.25"W
CUTTING ESTIMATES	
	BP-84
1000 MCM Copper	150

The Huskie **REC-P600R** is a wireless, remote operated, single acting hydraulic pump. It is our lightest most versatile hydraulic pump. The REC-P600R incorporates a high frequency receiver exclusively paired to a heavy duty cordless remote. The weather resistant IP65 rated remote utilizes two push buttons to advance and retract the tool. This wireless application was designed for a safer and smarter way to cut cable, eliminating injuries from potential arc flash on live cables. This allows the operator to distance themselves further from the cut for a fail-safe operation. The external receiver incorporates an on/off switch and comes standard with 6 feet of cable. The REC-P600R has the ability to work off of 1 or 2 Huskie batteries. It is recommended to operate the pump with a 10-foot hose. A longer hose will cause cycle times to increase. We recommend you specify the Huskie SC-Series flush face dripless coupler, as not to deplete the oil in the reservoir when changing tool heads.

The REC-P600R comes with the standard 3/8" Screw type coupler.



## HYDRAULIC OIL

### Replacement Hydraulic Oil

Huskie Tools offers replacement **Hydraulic Oil** in three sizes for any service needs. We offer Shell Tellus T-15 and Shell Tellus S2V15 clear hydraulic fluid. This Shell product can be used in all of our hydraulic products. This fluid can also be added to other clear hydraulic fluids for filling or topping off a hydraulic circuit. We also sell Mobile Aero HFA red hydraulic oil. Do not mix with other red or blue colored hydraulic fluids as this will "gel" and cause the tool or pump to malfunction. A complete MSDS is available from Huskie Tools upon request.

#### ORDER DATA

HF-5G	5 Gallon Container
HF-1G	1 Gallon Container
HF-1Q	1 Quart Container
HF-5GRED	Red Hydraulic Fluid for Low Temperature
HF-1GRED	Red Hydraulic Fluid 1 Gallon
HF-1QRED	Red Hydraulic Fluid 1 Quart



## URH-14

### Remote Control Handle

#### FEATURES

- For use with all electrical and battery operated single acting pumps
- Allows operator one hand control at the tool head
- 10' cord

The **URH-14** remote control handle is for use with the R-14EF, R-14EA and REC-P1 pumps. It is equipped with a standard 3/8" high pressure coupler that can be easily matched to your existing tool head. A 10 foot, three wire control cable can be hooked directly to the R-14EF or hard wired to any pump that has similar remote control features.

#### SPECIFICATIONS

Weight	3 lbs.
Size	8"L x 1.5"W x 6.5"H



## FS-14

### Foot Switch

#### FEATURES

- For use with all electrical and battery operated pumps
- Allows operator "hands free" control of advance and retract pump mode
- 10' cord

The heavy duty **FS-14** was designed to replace our pendant hand control on pump models R-14EF, R-14EA, R-14EAD and REC-P1. This foot control allows the operator to free his hands for better control of his work load. It has a green pedal for the advance mode and a red pedal for the retract mode.

#### SPECIFICATIONS

Weight	4.2 lbs.
Size	9.5"L x 7"W x 3"H

# HYDRAULIC PUMPS

## SC-SERIES

10,000 psi High Pressure  
Flush Face Couplers

### FEATURES

- 10,000 psi operating pressure marked on both halves
- Simple quick connect and disconnect
- Twist sleeve lock to prevent accidental disconnect
- Flush face, non-drip valving, both halves



SCF-8



SCF-8F



SCM-8



FC-8F



MC-8

### SPECIFICATIONS

Hose End	3/8" NPT
Threaded End	3/8" NPT
Working Pressure	10,000 psi

### MINIMUM BURST PRESSURE

Coupled	34,800 psi
Uncoupled	29,000 psi
Hand Connection	250 psi @150 lbs.
Fluid Loss Per Disconnection	.035 ml

### ORDER DATA

SCF-8F	Female Half w/Female Port
SCF-8	Female Half w/Male End
SCM-8	Male Half w/Female Port
FC-8F	Female Half w/Female Port
FC-8	Female Half w/Male Port
DC-SCF	Female Cap

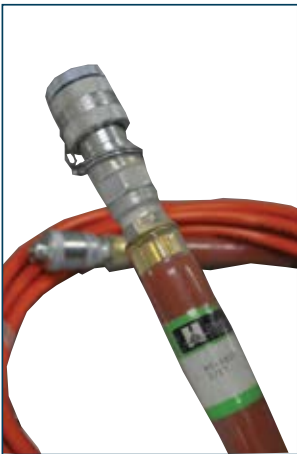
The **SC-SERIES** are flush face, snap-type couplers for use in high pressure applications. They are not interchangeable with low pressure flush face couplers. Positive connect or disconnect prevents tool failure due to partial coupled halves of conventional screw-type couplers.

## NC-SERIES

10,000 psi High Pressure  
Hydraulic Hose

### FEATURES

- Highly visible safety orange
- Heavy duty shrink wrap at hose ends for reduced risk of leaking
- Date coded at point of assembly



### ORDER DATA

NC-1606	3/16" x 6'
NC-1610	3/16" x 10'
NC-1615	3/16" x 15'
NC-1620	3/16" x 20'
NC-1625	3/16" x 25'
NC-450	1/4" x 50' (1/4" NPT Standard Ends)

Our high pressure, non-conductive **NC-SERIES** hoses and couplers are rated at 10,000 psi working pressure. The hose ends are covered with a thick clear jacket of heavy duty shrink wrap to reduce the risk of hose bursts at these points. As a result of injuries sustained by operators via broken or damaged high pressure hoses Huskie has developed a replacement hose improvement program for our customers. Consult your representative for information. Our hoses come standard with 3/8" male/female couplers.

**NOTE:** For operator safety we recommend hose replacement after 3 years.

## GAUGES

### Pressure Test Gauges



**PG-1**



**PG-4**



**PG-15**



**PG-630**



**PG-510**



**PG-610A**



**PG-ND**



**PG-SL**

The **PG-1**, in line pressure gauge has standard 3/8" couplers and a 10,000 psi indicator. It is used to test pump output pressure. Male and female couplers allow you to install it between the tool head and the pump.

The **PG-4** gauge is used to calibrate 12 ton output tools. It was designed to fit in all brands of 12 ton tools, and is supplied with U-type test dies. If you are using Kearney tools, specify PG-4K which comes with TDK-1 test dies.

The **PG-15** is designed to check pressure on Huskie 6 ton hydraulic tools (except the ECO-EZ and SL-Series tools. It is supplied with necessary adapter.

The **PG-630** is designed to check internal pressure on all pistol grip style battery operated tools. It is necessary to check pressure on our dieless tools.

The **PG-510** is a 12 and 14 ton gauge to be used exclusively with the REC-3510, REC-6510, and the EP-510C style tools. It can also be used on previous generations of the above tools.

The **PG-610A** gauge is used to calibrate 12 & 15 ton output tools. The gauge is supplied with HT41 test die. A "U" die adapter, the PU-15, (not supplied) is necessary to test a 15 ton tool.

The **PG-ND** gauge is used to calibrate the ECO-EZ Series tools, as well as the REC-ND tools and the **PG-SL** is for SL-ND tools with pull-pin. Along with the REC-6NDSL.

Our PG-4, PG-15, PG-630, & PG-610A gauges come complete with necessary dies, carrying case, and certification.

#### SPECIFICATIONS: PG-1

Description	Inline Pressure Gauge Kit
Weight	3 lbs.
Dial Face	2.5"
Size	9" x 4.5" x 1.5"

#### SPECIFICATIONS: PG-4/PG4K

Description	12 Ton Test Gauge Kit (PG-4) 12 Ton Test Gauge Kit for Kearney (PG-4K)
Weight	3.5 lbs.
Dial Face	4"
Size	9" x 4" x 1.5"

#### SPECIFICATIONS: PG-15

Description	6 Ton Test Gauge Kit
Weight	5 lbs.
Dial Face	4"
Size	10.5" x 4" x 2"

#### SPECIFICATIONS: PG-510

Description	12 & 14 Ton Test Gauge Kit
Weight	5 lbs.
Dial Face	4"
Size	10.5" x 5" x 2"

#### SPECIFICATIONS: PG-610A

Description	15 Ton Test Gauge Kit
Weight	3.3 lbs.
Dial Face	4"
Size	10" x 4" x 1.75"

#### SPECIFICATIONS: PG-ND & PG-SL

Description	Test Gauge Kit
Weight	3.4 lbs.
Dial Face	4"
Size	9.4" x 4" x 1.5"

# HYDRAULIC C-FRAME PUNCH & GROUND ROD BENDER

## SH-370M

35 Ton Hydraulic Steel Punch



### FEATURES

- Punches up to 1/2" mild steel
- 13/16" Max hold diameter
- Will punch: oval, round, square, and slotted holes
- Custom sizes available
- Operates from a 10,000 psi pump source

SQUARE DIES		SPECIFICATIONS	
ITEM	DESCRIPTION	Output	35 Ton
SHD-14SQ	1/4" Square Punch & Die Set	Weight	28 lbs.
SHD-38SQ	3/8" Square Punch & Die Set	Capacity	Up to 1/2" Thick Mils Steel
SHD-716SQ	7/16" Square Punch & Die Set	Max Hole	13/16" Diameter
SHD-12SQ	1/2" Square Punch & Die Set	Dimensions	14" x 8" x 3.5"
SHD-1732SQ	17/32" Square Punch & Die Set	Throat Depth	2.75"
SHD-916SQ	9/16" Square Punch & Die Set		

HEX DIES		ORDER DATA	
ITEM	DESCRIPTION	SH-370M	Steel Punch w/Male Coupler
SHD-716HEX	7/16" Hex Punch & Die Set	SH-370F	Steel Punch w/Female Coupler
SHD-916HEX	9/16" Hex Punch & Die Set		
SHD-1116HEX	11/16" Hex Punch & Die Set		
SHD-1316HEX	13/16" Hex Punch & Die Set		

OBLONG DIES		
ITEM	DESCRIPTION	BOLT SIZE
SHD-516X1316	5/16" x 13/16" Oblong Punch & Die Set	
SHD-38X1316	3/8" x 13/16" Oblong Punch & Die Set	
SHD-716X1316	7/16" x 13/16" Oblong Punch & Die Set	3/8"
SHD-12X38	1/2" x 3/8" Oblong Punch & Die Set	
SHD-12X34	1/2" x 3/4" Oblong Punch & Die Set	
SHD-12X1316	1/2" x 13/16" Oblong Punch & Die Set	
SHD-916X34	9/16" x 3/4" Oblong Punch & Die Set	1/2"
SHD-916X1316	9/16" x 13/16" Oblong Punch & Die Set	1/2"
SHD-58X1316	5/8" x 13/16" Oblong Punch & Die Set	
SHD-1116X1316	11/16" x 13/16" Oblong Punch & Die Set	5/8"
SHD-34X1316	3/4" x 13/16" Oblong Punch & Die Set	

ROUND DIES		
ITEM	DESCRIPTION	BOLT SIZE
SHD-18	1/8" Punch & Die Set	
SHD-316	3/16" Punch & Die Set	
SHD-14	1/4" Punch & Die Set	
SHD-932	9/32" Punch & Die Set	
SHD-516	5/16" Punch & Die Set	
SHD-386	3/8" Punch & Die Set	
SHD-716	7/16" Punch & Die Set	3/8"
SHD-12	1/2" Punch & Die Set	
SHD-916	9/16" Punch & Die Set	1/2"
SHD-58	5/8" Punch & Die Set	
SHD-1116	11/16" Punch & Die Set	5/8"
SHD-34	3/4" Punch & Die Set	
SHD-1316	13/16" Punch & Die Set	3/4"

The portable **SH-370M** punch was designed to punch holes through 1/2" mild steel, aluminum and copper. The punched hole size is 1/16" larger than your bolt size. A stripper guide extends on either side of the ram to strip the material after punching. This hand-held unit will operate from any 10,000 psi hydraulic pumping source.

Some uses include the punching of bus bars, tower iron, railing, I-beams and truck frames. Custom size punch and dies are available upon request. Oval and square sizes are also available. Consult factory for order information. The SH-370M comes complete with four sets of punch and die sizes for 3/8", 1/2", 5/8" and 3/4" bolts and carrying case.

**NOTE:** USE ONLY 10,000 psi RATED HOSE.



## REC-54GRB

### Gear-Driven Ground Rod Bender



### FEATURES

- Compact & portable
- Improved ergonomic handle
- Safety lockout switch
- One hand operation
- Helps eliminate copper theft
- Easily makes bends at any degree from 0° to 130°

### SPECIFICATIONS

Weight	13.45 lbs. w/Battery
Size	15.5"L x 4.5"H x 11"W
Capacity	5/8" Ground Rod



The **REC-54GRB** is a heavy duty copper ground rod bender, primarily used in substations to ground structures and equipment. 4/0 or other size copper used for typical methods of substation grounding can easily be cut and stolen. The REC-54GRB is clearly marked to make 30, 45, 60 & 90 degree bends but any degree bend is obtainable by feathering the tool to the desired position. The smooth rolling guides allow the ground rod to roll while making a bend so that the copper cladding on the ground rod remains intact without any scuff marks or rippling in the cladding which could cause the ground rod not to perform correctly.



195 Internationale Blvd.  
Glendale Heights, IL 60139

800.860.6170

[www.SpartacoGroup.com](http://www.SpartacoGroup.com)